

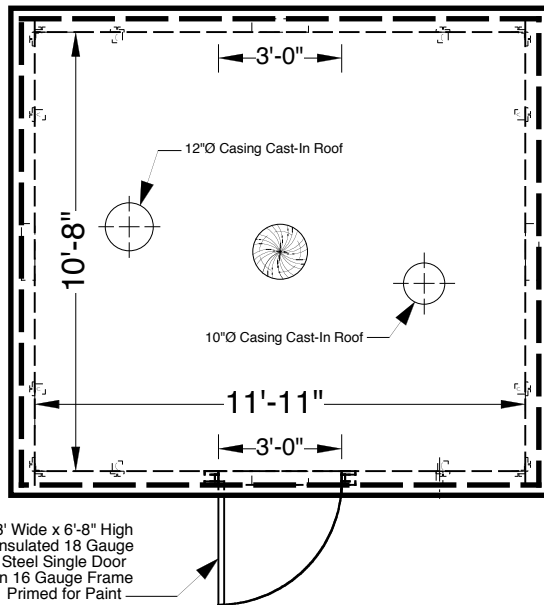
# Custom Size Building With Single Vented Door - 12'-7" x 11'-10" x 10'



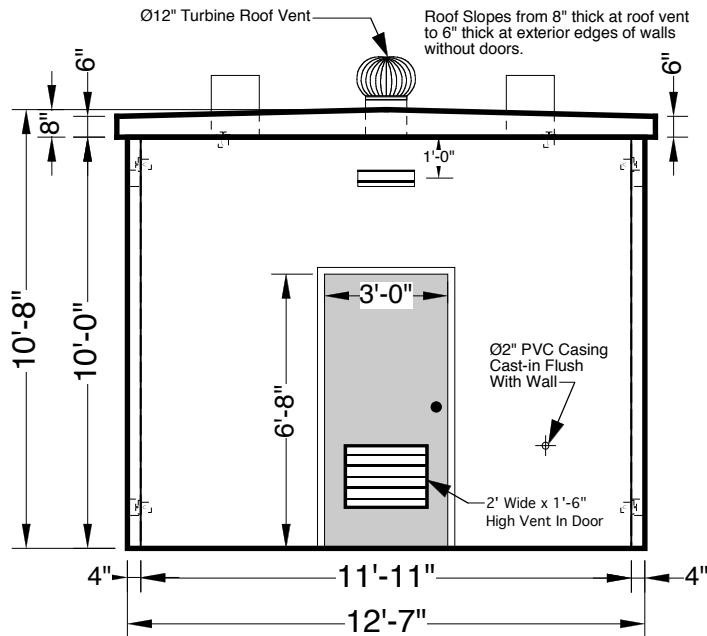
Advance Concrete Products Company

(800) 824-8351 (248) 887-4173 Fax: (248) 887-2755

Note:  
This Building Was Set  
On Existing Base Slab  
At Jobsite



**PLAN VIEW**



**SIDE VIEW**

All Concrete Shall Have A 28 Day Compressive Strength Of 5000 PSI.

Reinforcing Steel Shall Comply With ACI 318-83 Grade 60 Rebar.

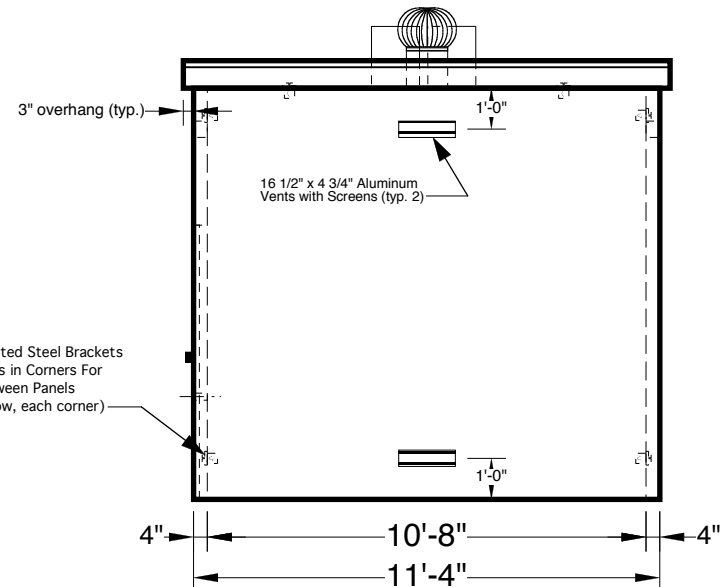
- Standard Structural Design Based On -  
Roof Load Of 60 psf  
Wind Load Of 27 psf Or 130 mph  
Fire Resistance Rating Of 1 1/2 Hours

Silicone Caulk Is Provided For Interior And Exterior Joints.

Steel Door(s) Manufactured By CECO Door Division:  
1 3/4" Thick 18 Gauge Steel Door In  
16 Gauge Frame, Primed For Paint, With  
Keyed Dead-Bolt Lock.

- Available Options -  
Single or Double Doors  
Custom Opening Locations  
Custom Size Vents  
Exterior Exposed Limestone Aggregate Finish  
Exterior Simulated Brick Finish

To meet your jobsite requirements, we can  
customize size of buildings to the nearest inch.



**END VIEW**

1/4" Epoxy Painted Steel Brackets  
with Ø1/2" Bolts in Corners For  
Connection Between Panels  
(typ. high and low, each corner)