



# Precast Concrete Detector Check Valve Pit - 8' x 6' x 5'



Advance Concrete Products Company

info@advanceconcreteproducts.com

248-887-4173

All Concrete Shall Have A 28 Day Compressive Strength Of 4500 PSI.

Reinforcing Steel Shall Comply With ASTM A615 Grade 60 Rebar.  
Bar Bending And Placement Shall Comply With The Latest ACI Standards.

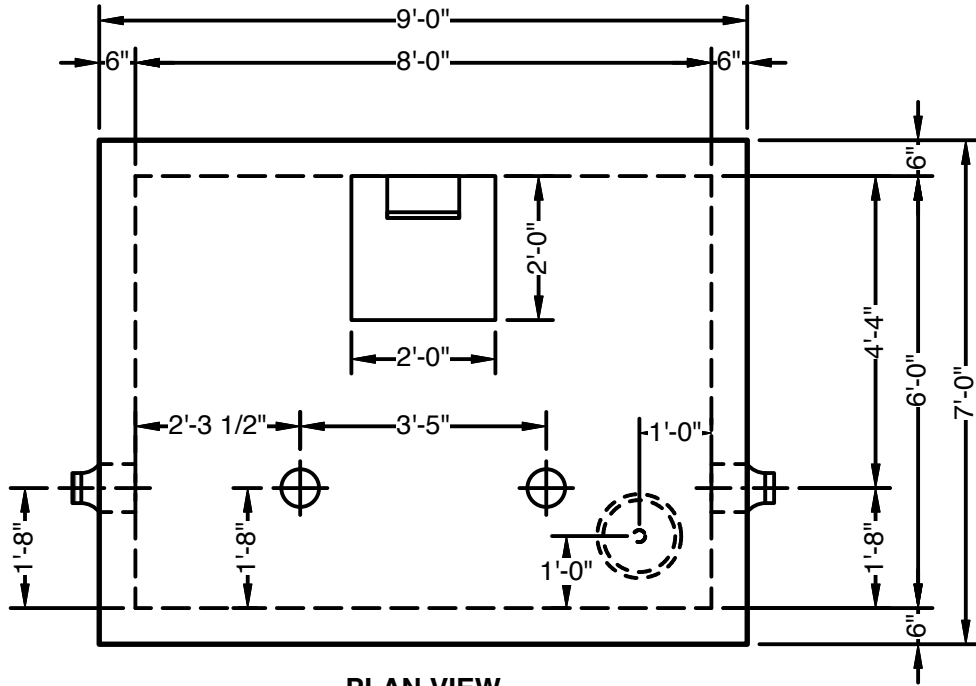
Standard Structural Design Based On AASHTO HS 20 Wheel Loading  
with 12" to 24" Cover.

1"  $\varnothing$  CS-102 Butyl Rope Mastic Is Provided For Placement  
Between Top And Bottom Sections Of Vault.

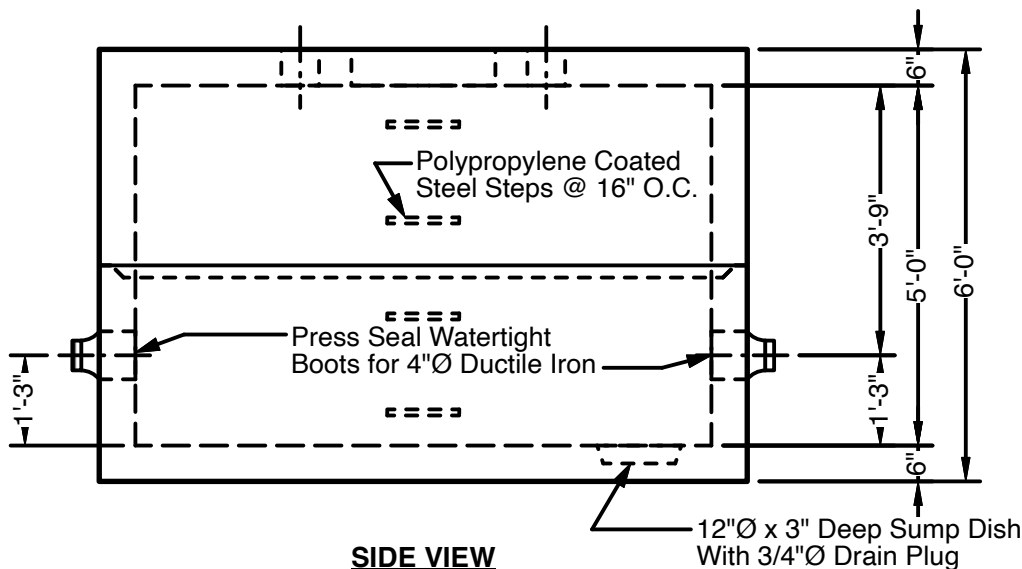
This Drawing Shows a Sample. Meter Pits are  
Custom Fabricated to Meet Your Job Requirements.

- Options
- Custom Opening Locations and Sizes
  - Watertight Boots or Mechanical Seals
  - Rectangular Precast Concrete Risers
  - Aluminum Access Hatches
  - Round Manhole Covers
  - Grade Adjustment Rings

**Approximate Weight** Total:  $\pm$  20,600 Lbs.  
Bottom Section :  $\pm$  10,600 Lbs. Top Section:  $\pm$  10,000 Lbs.

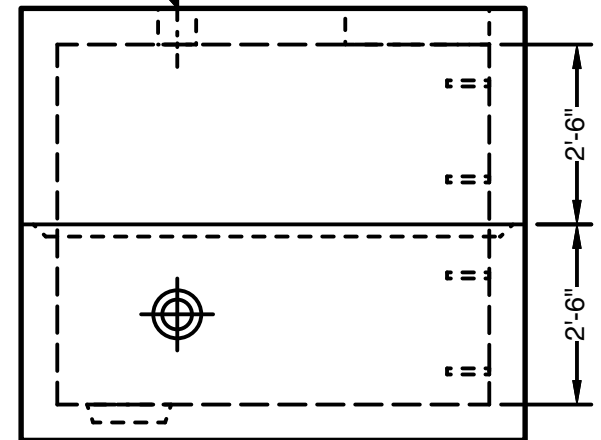


**PLAN VIEW**



**SIDE VIEW**

$\varnothing$ 6 5/16" Opening in Roof  
for Valve Box



**END VIEW**