



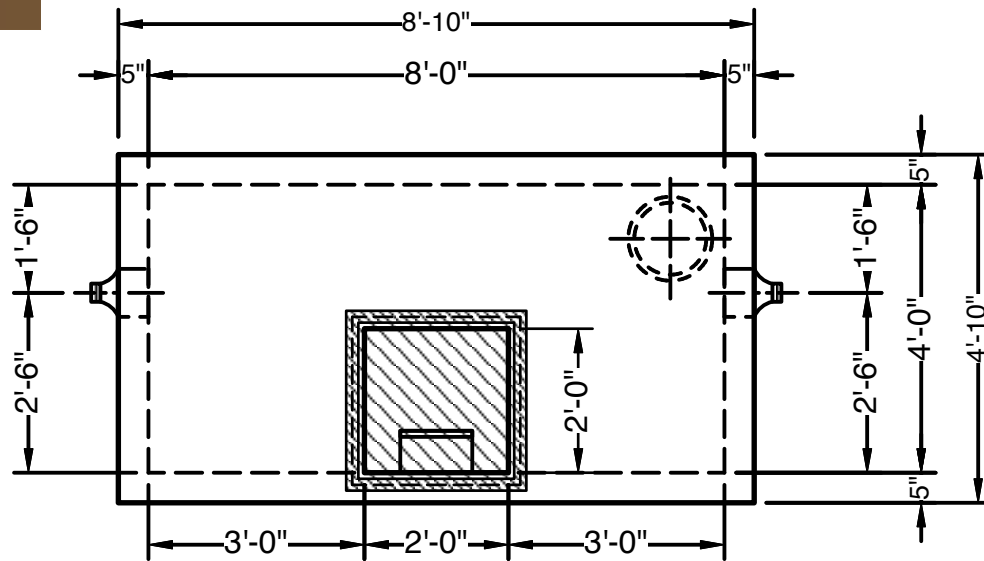
# Precast Concrete Meter Pit - 8' x 4' x 6'



Advance Concrete Products Company

info@advanceconcreteproducts.com

248-887-4173



**PLAN VIEW**

All Concrete Shall Have A 28 Day Compressive Strength Of 4500 PSI.

Reinforcing Steel Shall Comply With ASTM A615 Grade 60 Rebar. Bar Bending And Placement Shall Comply With The Latest ACI Standards.

Standard Structural Design Based On AASHTO HS 20 Wheel Loading with 12" to 24" Cover.

1" Ø CS-102 Butyl Rope Mastic Is Provided For Placement Between Top And Bottom Sections Of Vault.

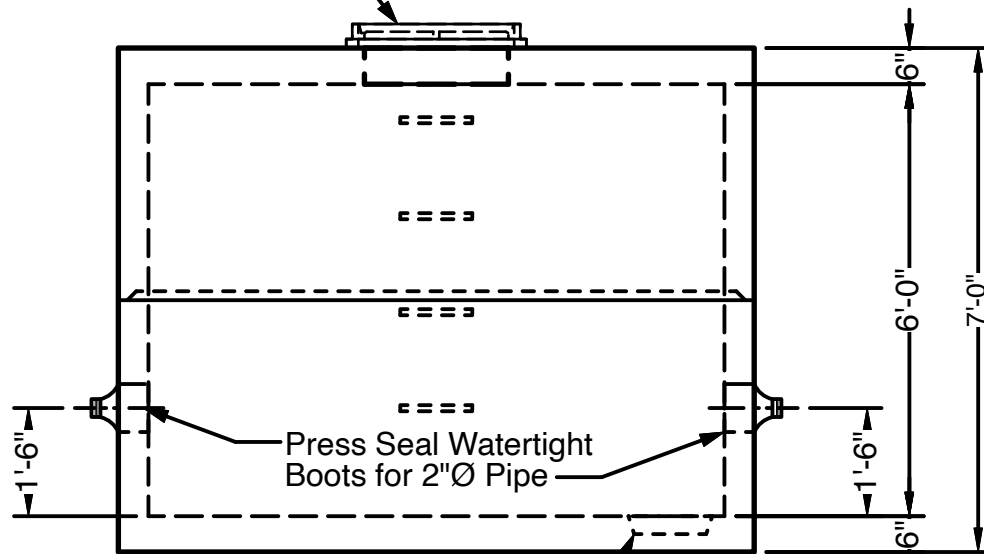
This Drawing Shows a Sample. Meter Pits are Custom Fabricated to Meet Your Job Requirements.

- Options
- Custom Opening Locations and Sizes
  - Watertight Boots or Mechanical Seals
  - Rectangular Precast Concrete Risers
  - Aluminum Access Hatches
  - Round Manhole Covers
  - Grade Adjustment Rings

**Approximate Weight** Total: ± 15,500 Lbs.  
Bottom Section : ± 7,900 Lbs. Top Section : ± 7,600 Lbs.

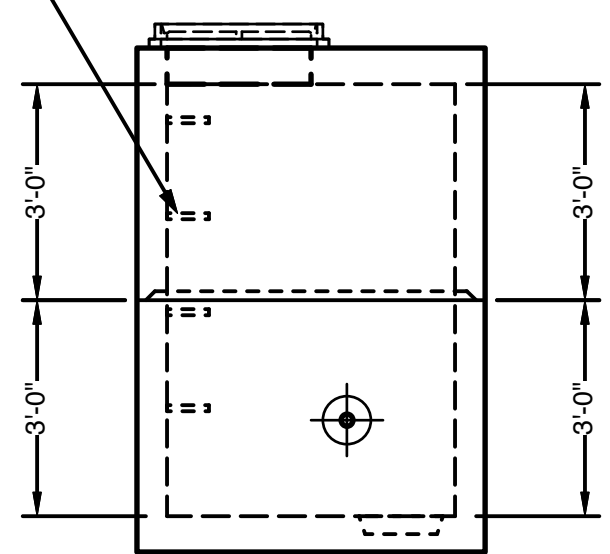
EJ Group #8308 Gray Iron Frame and Cover with 24" x 24" Clear Opening

Polypropylene Coated Steel Steps @ 16" O.C.



12" x 3"Ø Deep Sump Dish

**SIDE VIEW**



**END VIEW**