



Precast Concrete Meter Pit - 8'-8" x 8'-8" x 7'



Advance Concrete Products Company

info@advanceconcreteproducts.com

248-887-4173

All Concrete Shall Have A 28 Day Compressive Strength Of 4500 PSI.

Reinforcing Steel Shall Comply With ASTM A615 Grade 60 Rebar.
Bar Bending And Placement Shall Comply With The Latest ACI Standards.

Standard Structural Design Based On AASHTO HS 20 Wheel Loading
with 12" to 24" Cover.

1" Ø CS-102 Butyl Rope Mastic Is Provided For Placement
Between Top And Bottom Sections Of Vault.

This Drawing Shows a Sample. Meter Pits are
Custom Fabricated to Meet Your Job Requirements.

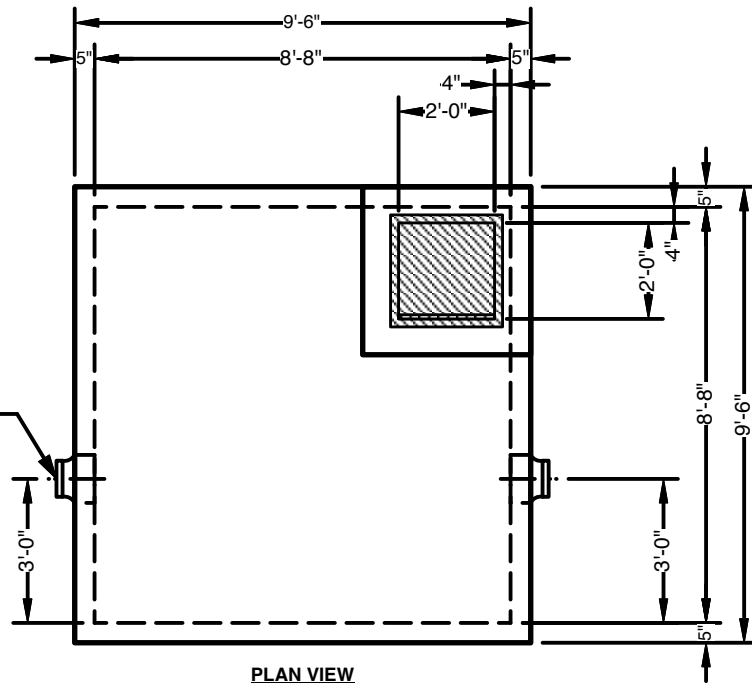
Options

- Custom Opening Locations and Sizes
- Watertight Boots or Mechanical Seals
- Rectangular Precast Concrete Risers
- Aluminum Access Hatches
- Round Manhole Covers
- Grade Adjustment Rings

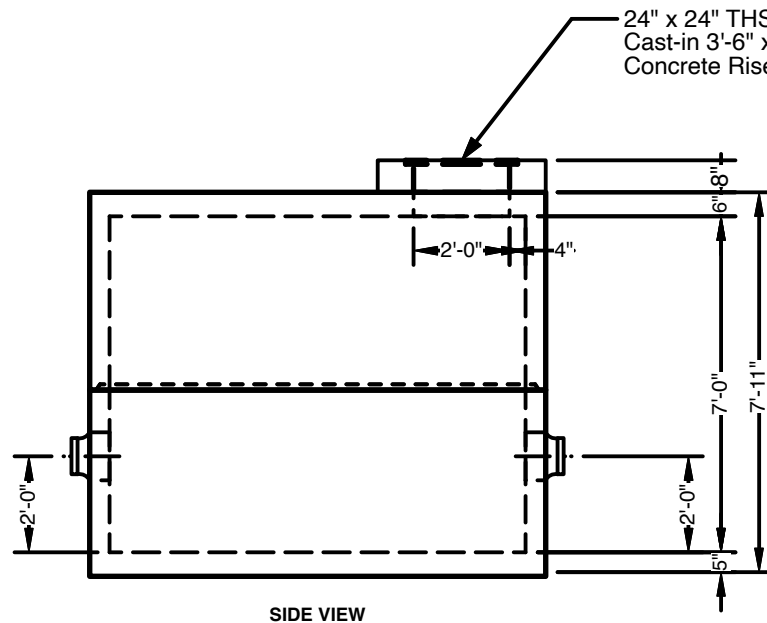
Approximate Weight Total: ± 28,500 Lbs.

Bottom Section : ± 14,500 Lbs. Top Section: ± 14,000 Lbs.

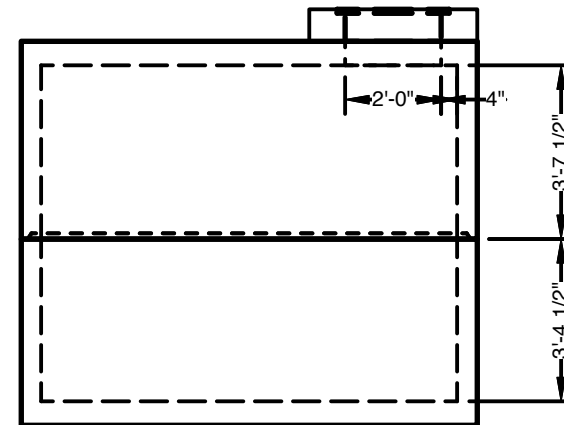
Press Seal Boot for
Ø8" DI Pipe (typ. 2)



PLAN VIEW



SIDE VIEW



END VIEW