



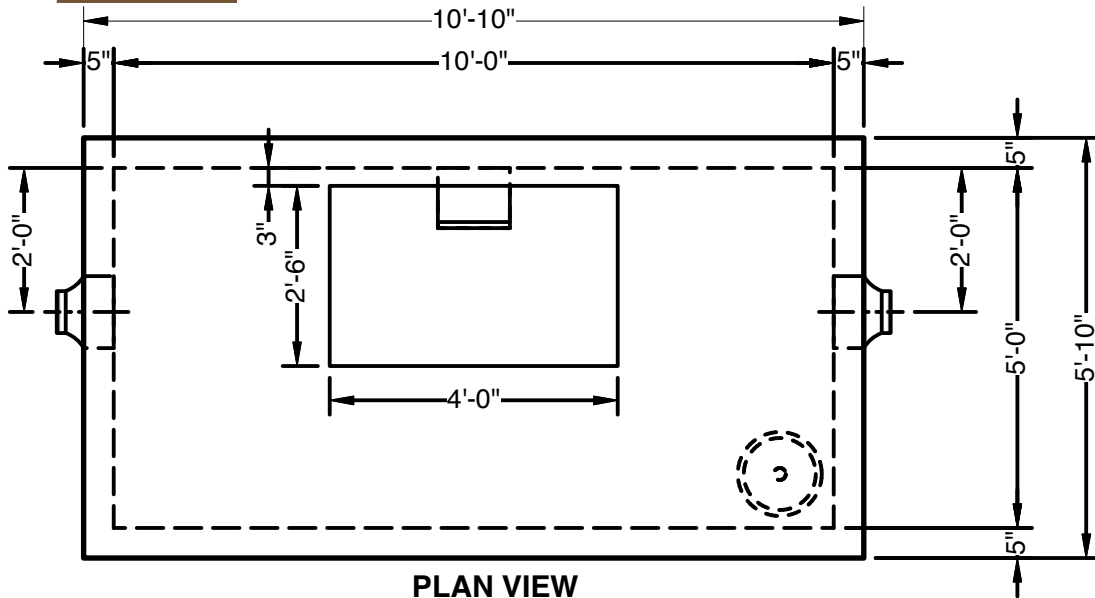
Precast Concrete Meter Pit - 10' x 5' x 7'



Advance Concrete Products Company

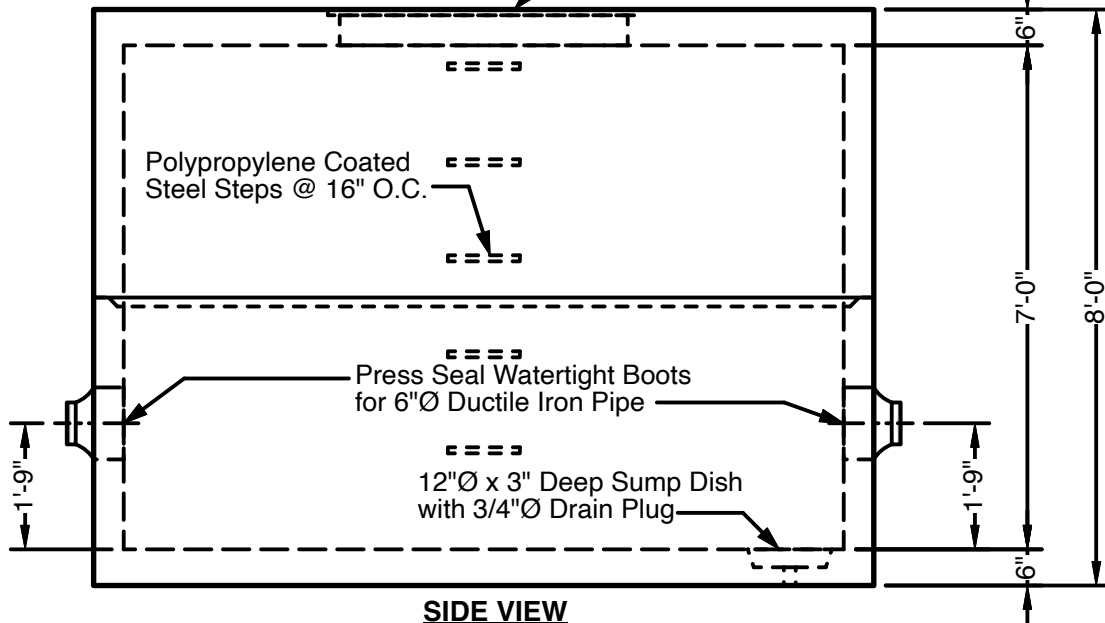
info@advanceconcreteproducts.com

248-887-4173

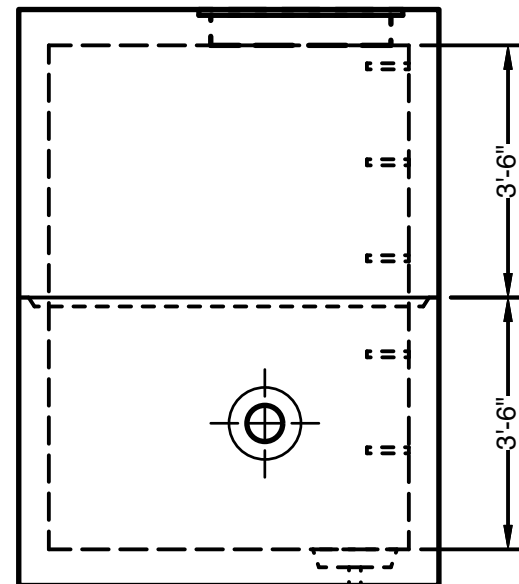


PLAN VIEW
(without hatch)

Aluminum Hatch Can Be Cast-in Roof Or Cast-in Precast Concrete Square Riser During Production. Variety of Sizes and Options Available.



SIDE VIEW



END VIEW

All Concrete Shall Have A 28 Day Compressive Strength Of 4500 PSI.

Reinforcing Steel Shall Comply With ASTM A615 Grade 60 Rebar.
Bar Bending And Placement Shall Comply With The Latest ACI Standards.

Standard Structural Design Based On AASHTO HS 20 Wheel Loading
with 12" to 24" Cover.

1" Ø CS-102 Butyl Rope Mastic Is Provided For Placement
Between Top And Bottom Sections Of Vault.

This Drawing Shows a Sample. Meter Pits are
Custom Fabricated to Meet Your Job Requirements.

- Options
- Custom Opening Locations and Sizes
 - Watertight Boots or Mechanical Seals
 - Rectangular Precast Concrete Risers
 - Aluminum Access Hatches
 - Round Manhole Covers
 - Grade Adjustment Rings

Approximate Weight Total: ± 22,500 Lbs.
Bottom Section : ± 11,000 Lbs. Top Section: ± 11,500 Lbs.