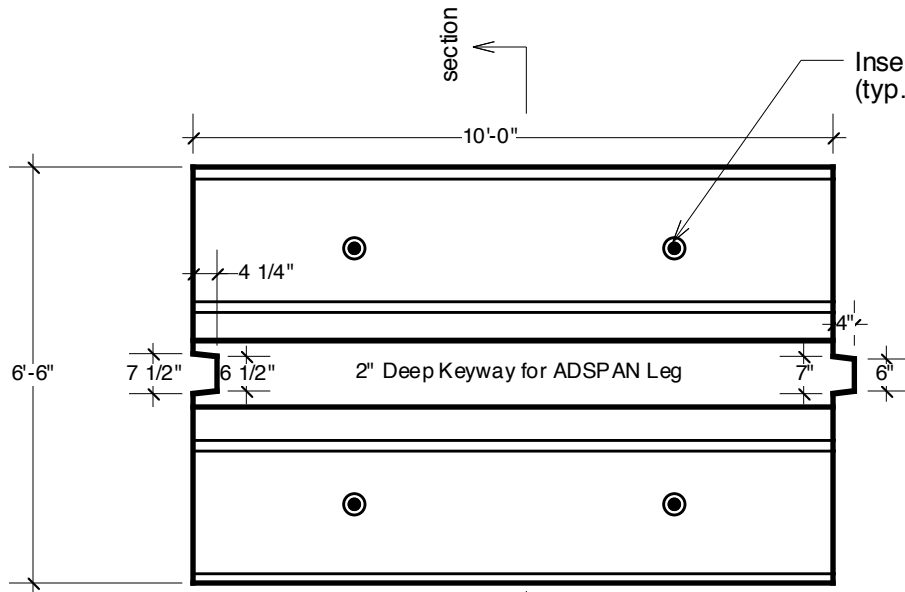


ADSPAN® Footing

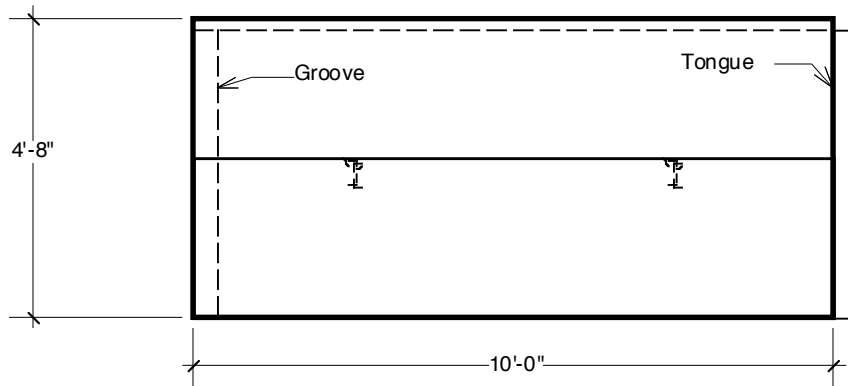
Advance Concrete Products Company



(800) 824-8351 (248) 887-4173 Fax: (248) 887-2755



PLAN VIEW



SIDE VIEW

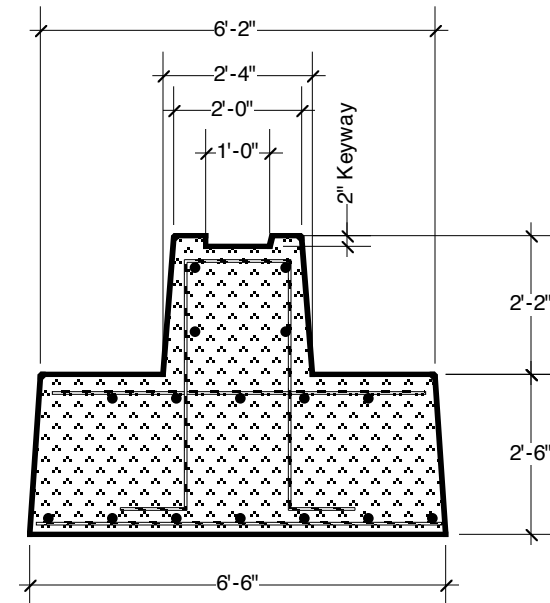
Insert for Jobsite Handling
(typ. 4 per footing)

All Concrete Shall Have A Minimum 28 Day Compressive Strength Of 4000 PSI.

Reinforcing Steel Shall Comply With ASTM A615 Grade 60 Rebar.

Alternate Lengths, Heights, and Widths Available.

Footing Shown Weighs Approximately 31,000 lbs.



SECTION VIEW