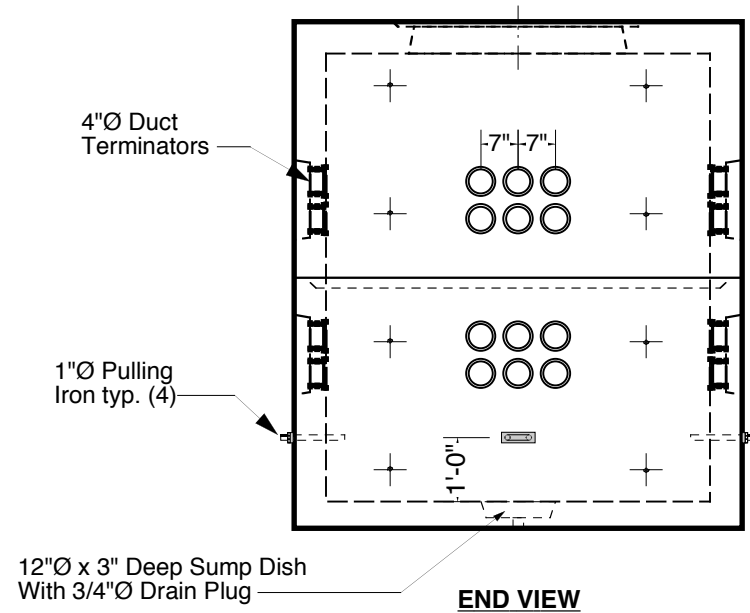
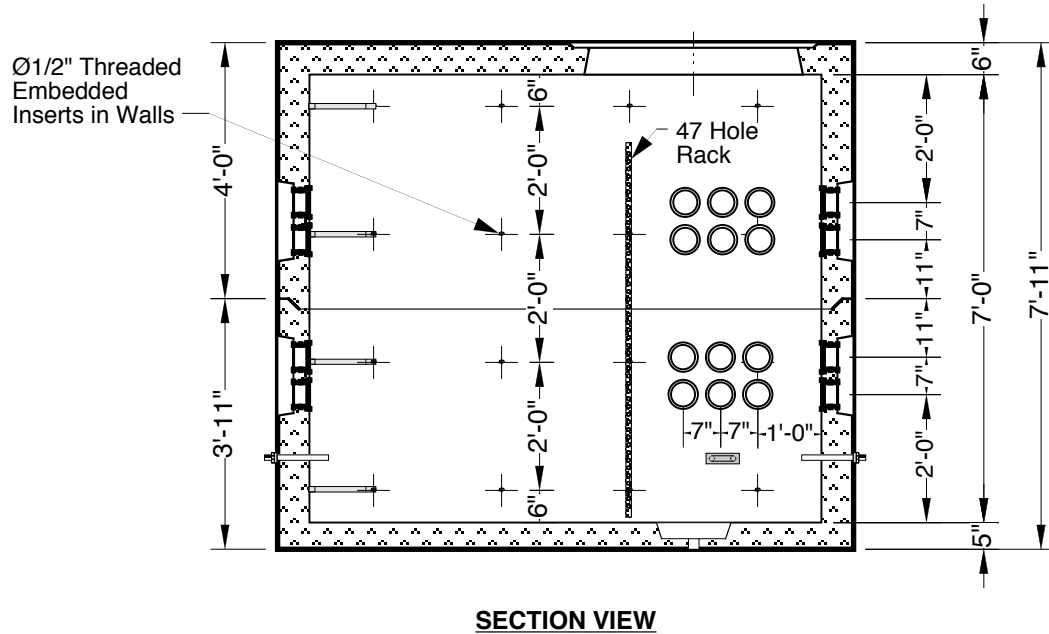
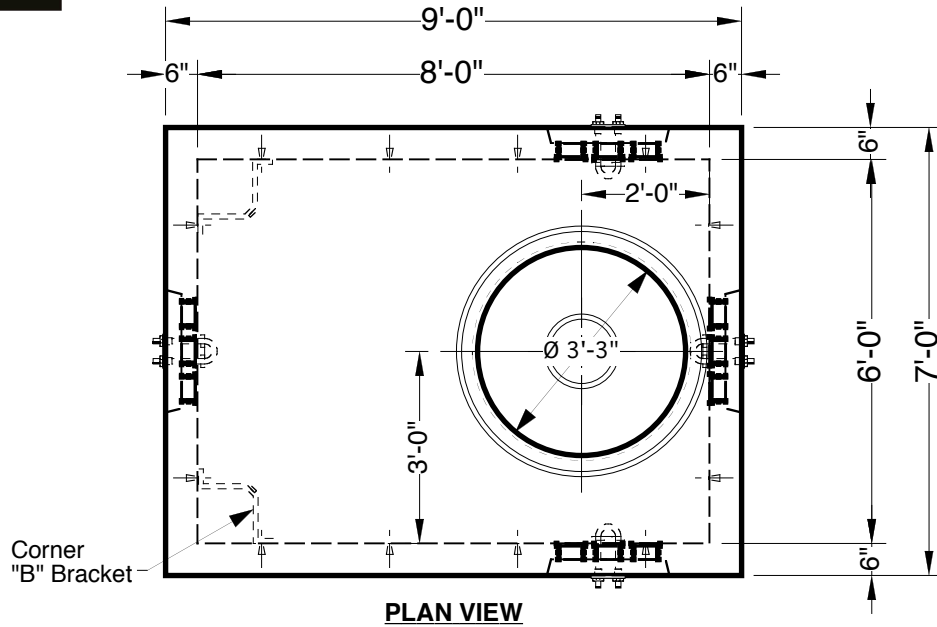


8' x 6' x 7' Type J Manhole

Advance Concrete Products Company



(800) 824-8351 (248) 887-4173 Fax: (248) 887-2755



All Concrete Shall Have A 28 Day Compressive Strength Of 4500 PSI.
Reinforcing Steel Shall Comply With ASTM A615 Grade 60 Rebar.
Bar Bending And Placement Shall Comply With The Latest ACI Standards.
Standard Structural Design Based On AASHTO HS-20 Wheel Loading.

-Optional Galvanized Steel Hardware Package-

5" Brackets	12
B" Brackets	16
47 Hole Racks	6
1/2" X 13 X 1 1/4" Bolts	24
1/2" X 13 Nuts	24
1/2" X 13 X 1 3/4" Bolts	36
8'-0" Hooked Ladder	1

1" Ø Butyl Rubber Rope Mastic Is Provided For Placement Between Top And Bottom Sections Of Vault.

6", 12", & 24" High Grade Adjustment Rings Available

Approximate Weight Total: ± 24,800 Lbs.
Bottom Section : ± 12,700 Lbs. Top Section: ± 12,100 Lbs.