

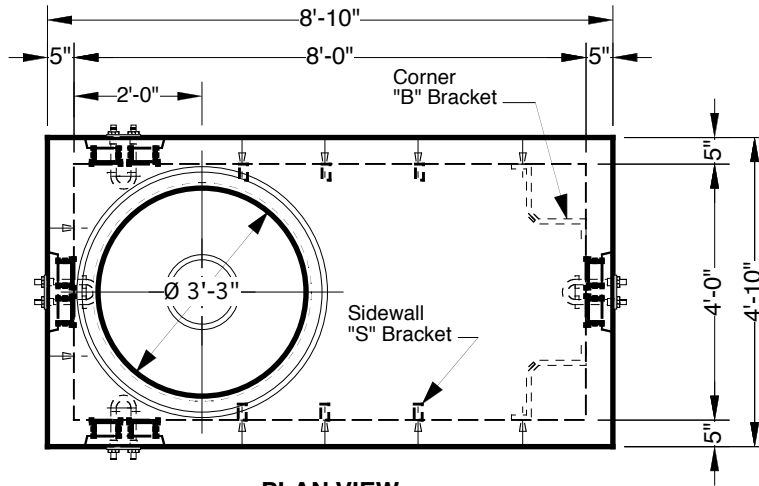


# 8' x 4' x 6' Type SJ Manhole

Advance Concrete Products Company



(800) 824-8351 (248) 887-4173 Fax: (248) 887-2755



**PLAN VIEW**

All Concrete Shall Have A 28 Day Compressive Strength Of 4500 PSI.

Reinforcing Steel Shall Comply With ASTM A615 Grade 60 Rebar.  
Bar Bending And Placement Shall Comply With The Latest ACI Standards.

Standard Structural Design Based On AASHTO HS 20 Wheel Loading.

**-Optional Galvanized Steel Hardware Package-**

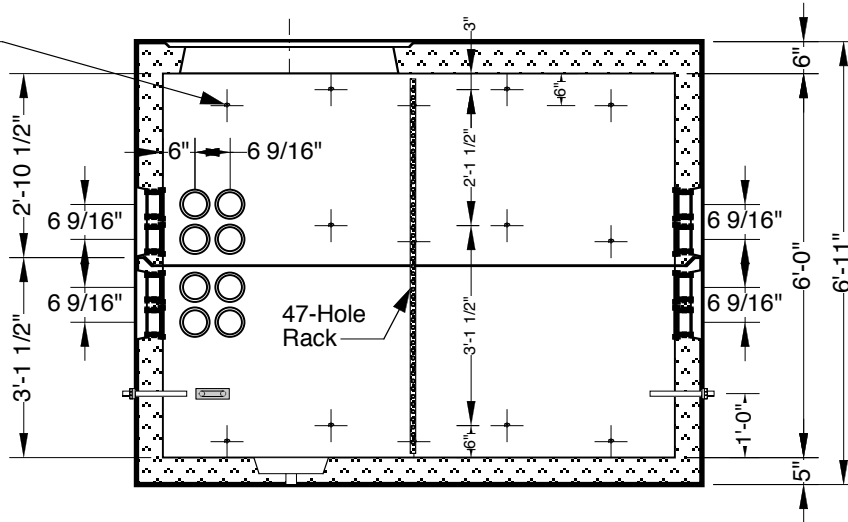
"S" Brackets	12
"B" Brackets	6
47 Hole Racks	8
1/2" X 13 X 1 1/4" Bolts	18
1/2" X 13 Nuts	18
1/2" X 13 X 1 3/4" Bolts	24
7'-0" Hooked Ladder	1

1" Ø Butyl Rubber Rope Mastic Is Provided For Placement  
Between Top And Bottom Sections Of Vault.

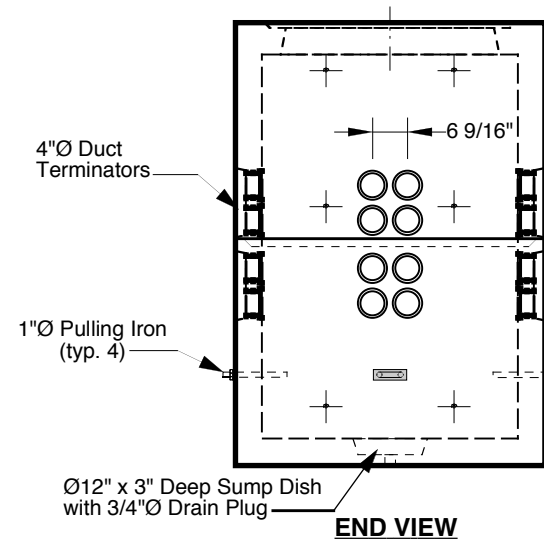
6", 12", & 24" High Grade  
Adjustment Rings Available

**Approximate Weight** Total: ± 15,000 Lbs.  
Bottom Section : ± 7,500 Lbs. Top Section: ± 7,500 Lbs.

Ø1/2" Threaded  
Embedded  
Inserts in Walls



**SECTION VIEW**



**END VIEW**