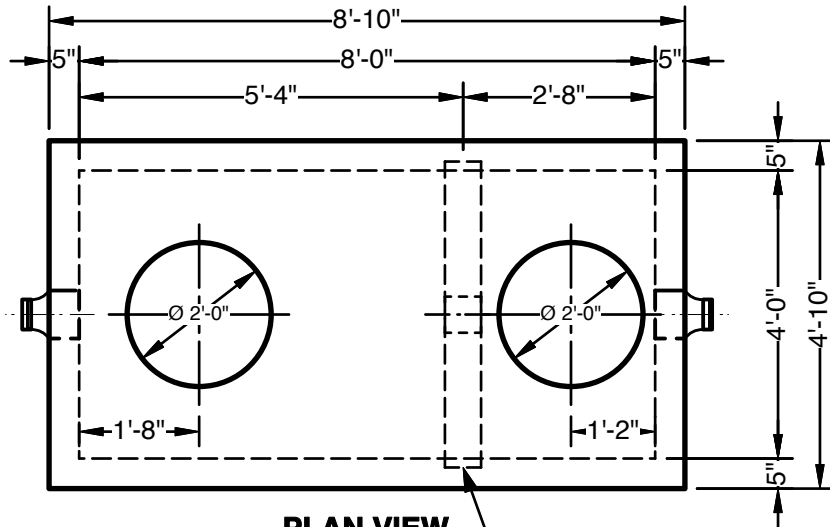


700 Gallon Interceptor - 8' x 4' x 4'

Advance Concrete Products Company



(800) 824-8351 (248) 887-4173 Fax: (248) 887-2755



PLAN VIEW
(without frames & covers)

Precast Concrete
6" Thick Divider Wall

All Concrete Shall Have A 28 Day Compressive Strength Of 4500 PSI.
Formula 5

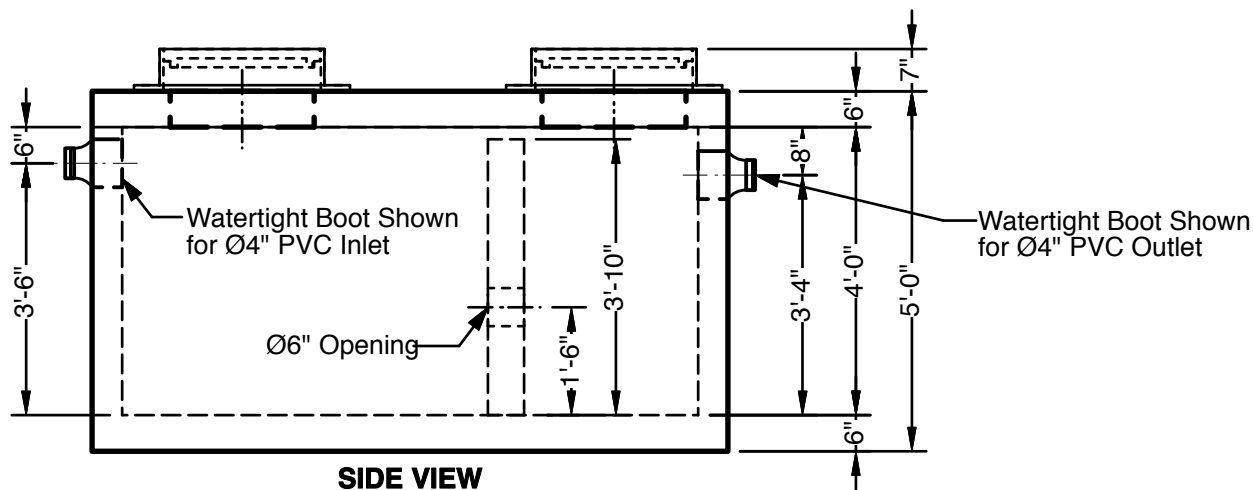
Reinforcing Steel Shall Comply With ASTM A706 Grade 60 Rebar.
Bar Bending And Placement Shall Comply With The Latest ACI Standards.

Standard Structural Design Based On AASHTO HS 20 Wheel Loading.

Grout for Divider Wall Keyways Supplied & Installed by Others.

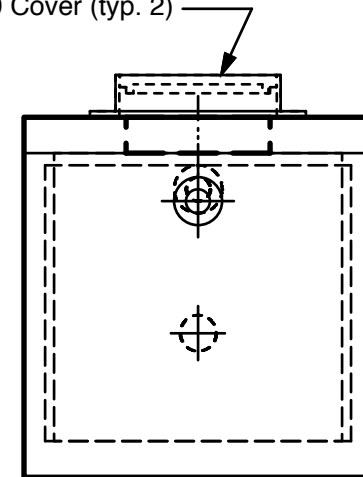
1" Ø Butyl Rope Mastic Is Provided For Placement
Between Top And Bottom Sections Of Vault.
(Fuel Resistant Rope Mastic is provided for Oil Interceptors)

Approximate Weight Total: ± 13,700 Lbs.
Bottom Section : ± 9,800 Lbs. Top Slab: ± 2,750 Lbs.
Divider Wall: ± 1,150 Lbs.



SIDE VIEW

EJ Group #1045 HD Frame &
Bolt-Down, Gasketed PT
Ø24" #1040 Cover (typ. 2)



END VIEW