

# 645 Gallon Dose Dual Siphon Chamber

Advance Concrete Products Company



(800) 824-8351 (248) 887-4173 Fax: (248) 887-2755

Chamber will be shipped with Two Fluid Dynamics #423 Siphons Installed to Alternate Dose As Shown.

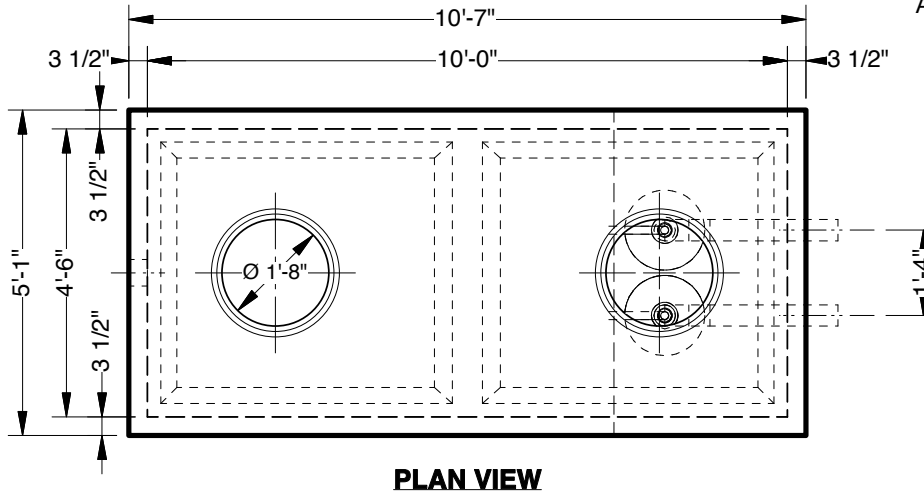
All Concrete Shall Have A 28 Day Compressive Strength Of 4000 PSI.

Reinforcing Shall Be 6x6 10/10 Welded Wire Mesh.

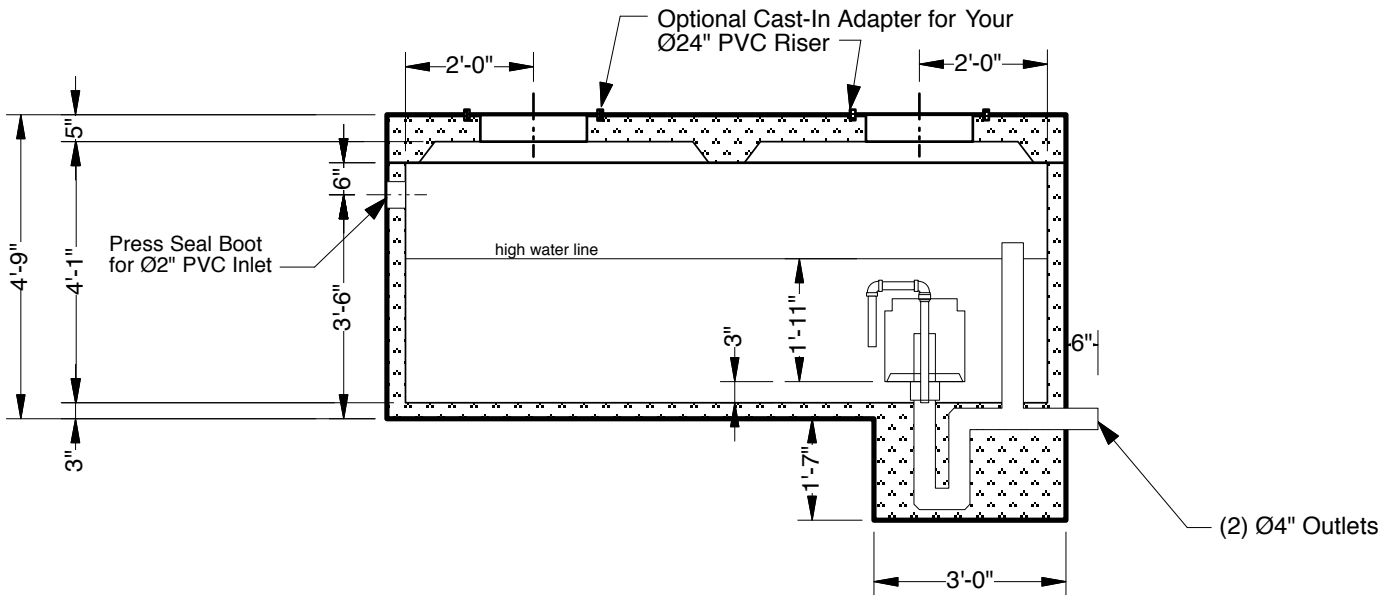
Standard Structural Design Based On Pedestrian Loading and Maximum 3'-6" Earth Cover.

1/2" Ø Butyl Rubber Rope Mastic Is Provided For Placement In Joint Between Roof and Walls.

Approximate Weight: 14,700 lbs.



**PLAN VIEW**



**SECTION VIEW**