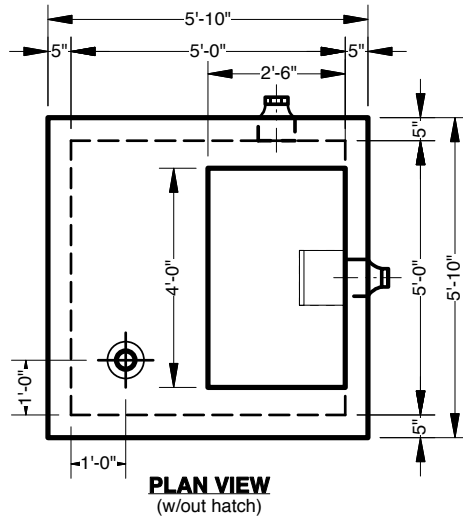


Dosing / Pump Chamber - 5' x 5' x 8'



Advance Concrete Products Company

(800) 824-8351 (248) 887-4173 Fax: (248) 887-2755



All Concrete Shall Have A 28 Day Compressive Strength Of 4500 PSI.
 Reinforcing Steel Shall Comply With ASTM A615 Grade 60 Rebar.
 Bar Bending And Placement Shall Comply With The Latest ACI Standards.
 Standard Structural Design Based On AASHTO HS 20 Wheel Loading.

1" Ø Butyl Rubber Rope Mastic Is Provided For Placement
 Between Top And Bottom Sections Of Vault.

- Available Options -
- 6" Wide Membrane For Exterior of Joint.
- Cast-In Adapters For PVC Risers.
- 12" High Concrete Risers.
- Divider Walls.
- Residential Outlet Filter.
- Aluminum Hatches.

We also build 3' x 3', 4' x 4', and 6' x 6' Dosing / Pump Chambers.

The height can be ordered to the closest inch required.

