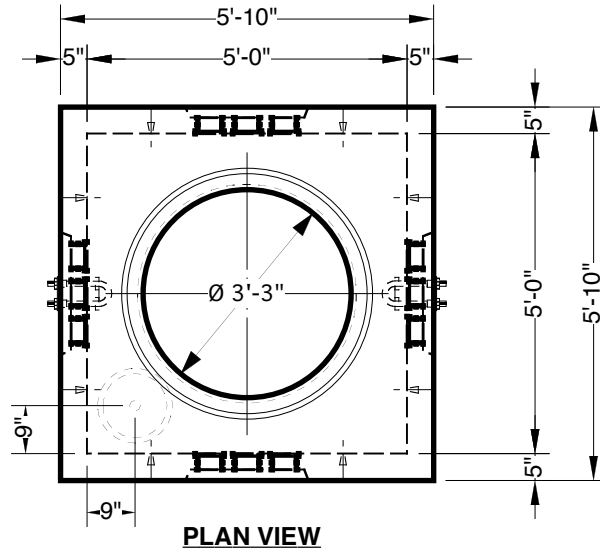


5' x 5' x 6' Manhole

Advance Concrete Products Company



(800) 824-8351 (248) 887-4173 Fax: (248) 887-2755



All Concrete Shall Have A 28 Day Compressive Strength Of 4500 PSI.

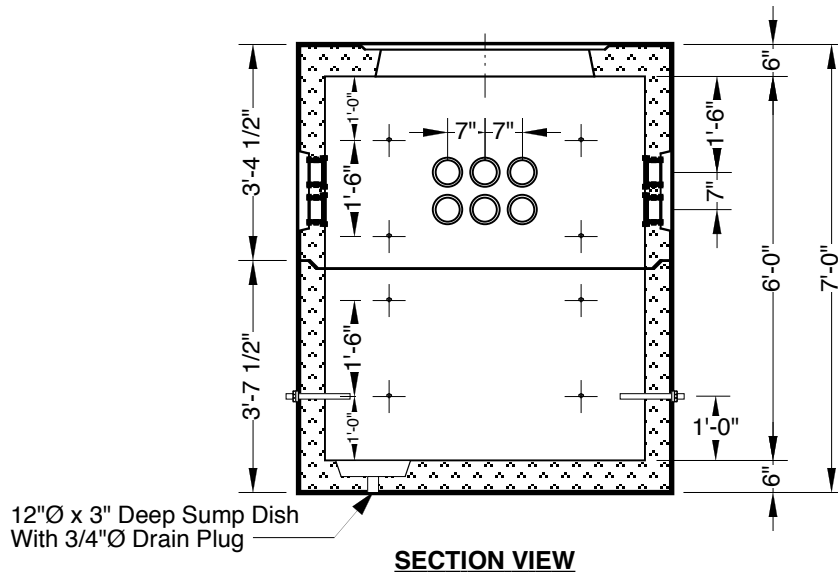
Reinforcing Steel Shall Comply With ASTM A615 Grade 60 Rebar.
Bar Bending And Placement Shall Comply With The Latest ACI Standards.

Standard Structural Design Based On AASHTO HS 20 Wheel Loading.

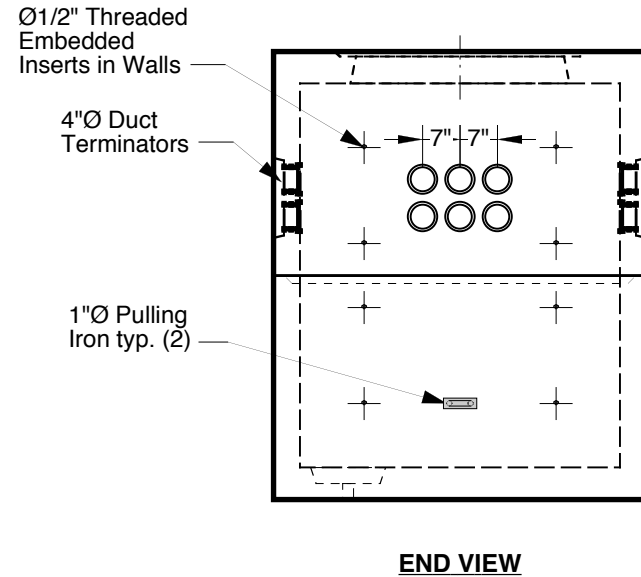
1" Ø Butyl Rubber Rope Mastic Is Provided For Placement
Between Top And Bottom Sections Of Vault.

- Options -
- Cast Iron, Heavy Duty Frame & Cover
- 6", 12", & 24" High Grade Adjustment Rings
- Hot-Dipped Galvanized Steel Ladder
- Hardware
- 8" Thick Walls For Extra Heavy Loading Conditions
- Height Requirements To The Nearest Inch

Approximate Weight Total: ± 12,800 Lbs.
Bottom Section : ± 6,700 Lbs. Top Section: ± 6,100 Lbs.



12"Ø x 3" Deep Sump Dish
With 3/4"Ø Drain Plug



Ø1/2" Threaded
Embedded
Inserts in Walls

4"Ø Duct
Terminators

1"Ø Pulling
Iron typ. (2)