

5' x 5' x 5' Aircraft Loading Handhole



Advance Concrete Products Company

(800) 824-8351 (248) 887-4173 Fax: (248) 887-2755

All Concrete Shall Have A 28 Day Compressive Strength Of 5000 Psi

Reinforcing Steel Shall Comply With ASTM A615 Grade 60 Rebar
Bar Bending And Placement Shall Comply With The Latest ACI Standards

Aircraft Rated Structural Design

Please contact us for reinforcement information

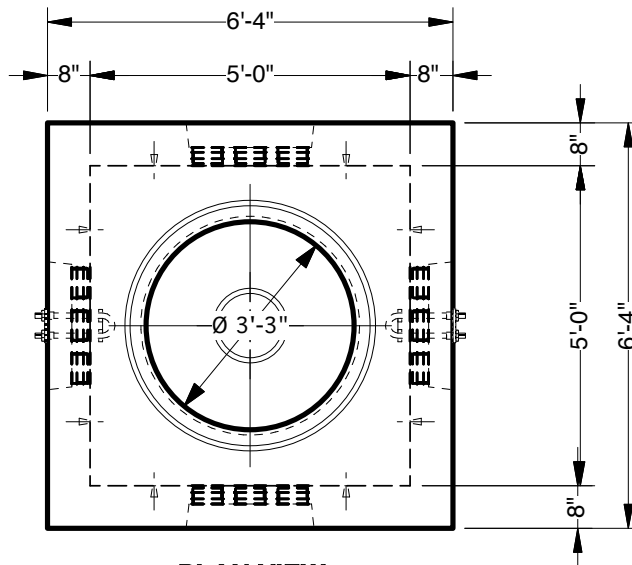
Standard Structural Design Based On 75,000 Lb. Wheel Loading.
Deck Thickness May Be Increased For Heavier Loading Conditions

1" Ø Butyl Rubber Rope Mastic Is Provided
For Placement In Top Seam.

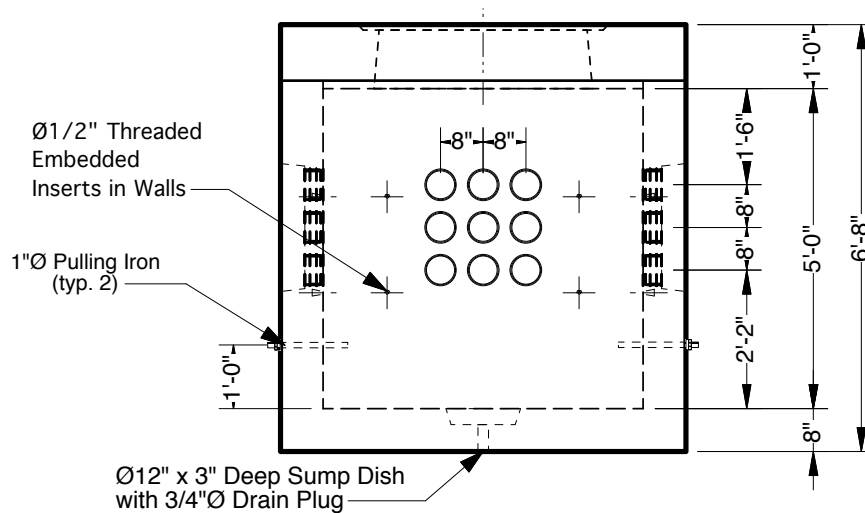
- Options -

- Cast Iron Heavy Duty Frames & Covers
- Aircraft Loading Hatches with Spring Assist
- Galvanized Steel or Non-Metallic Hardware
- 6", 12" And 24" High Grade Adjustment Rings
- Custom Openings or Terminator Locations

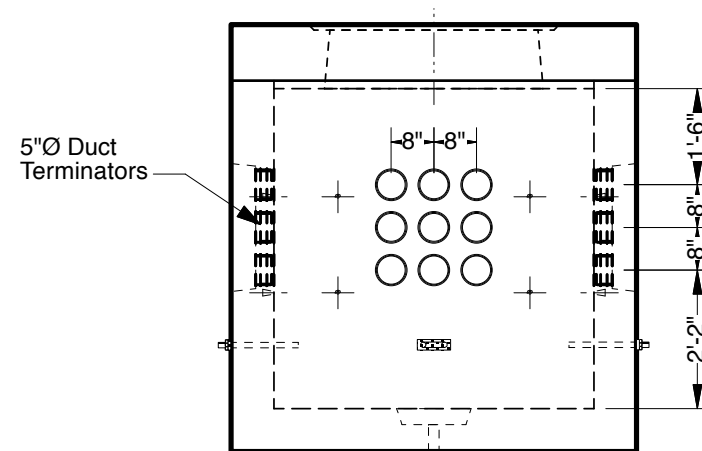
Approximate Weight Total: ± 20,400 Lbs.
Bottom Section : ± 15,500 Lbs. Roof: ± 4,900 Lbs.



PLAN VIEW



SIDE VIEW



END VIEW