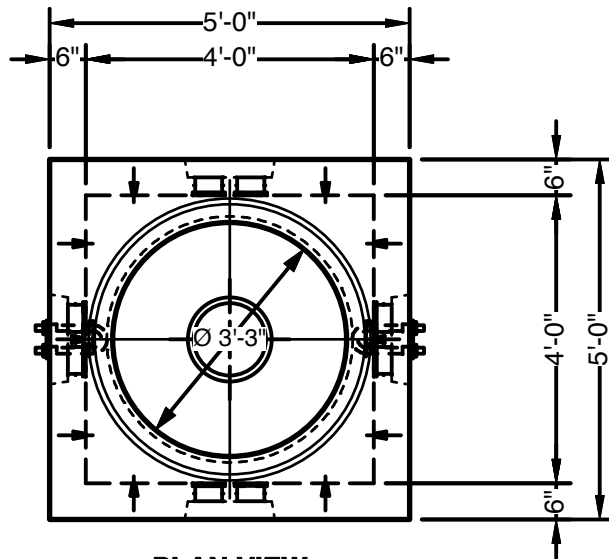


4' x 4' x 4' Standard Terminator Handhole - Two Piece Style



Advance Concrete Products Company

(800) 824-8351 (248) 887-4173 Fax: (248) 887-2755



PLAN VIEW

All Concrete Shall Have A 28 Day Compressive Strength Of 4500 PSI.

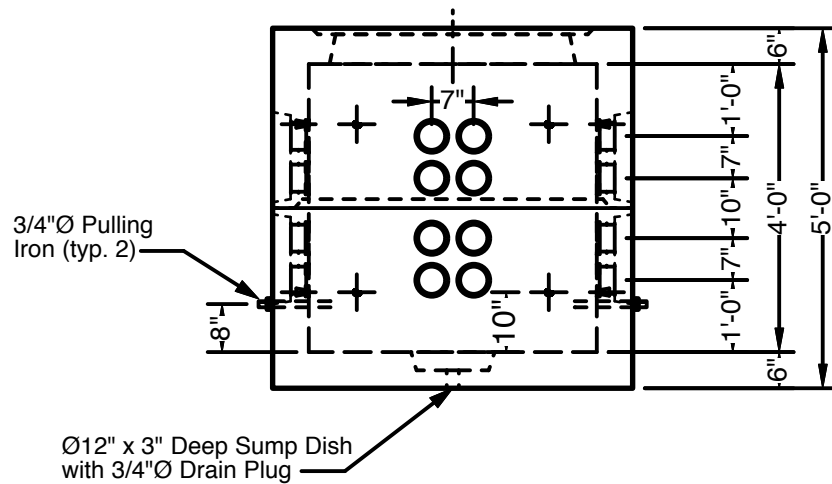
Reinforcing Steel Shall Comply With ASTM A615 Grade 60 Rebar. Bar Bending And Placement Shall Comply With The Latest ACI Standards.

Standard Structural Design Based On AASHTO HS-20 Wheel Loading.

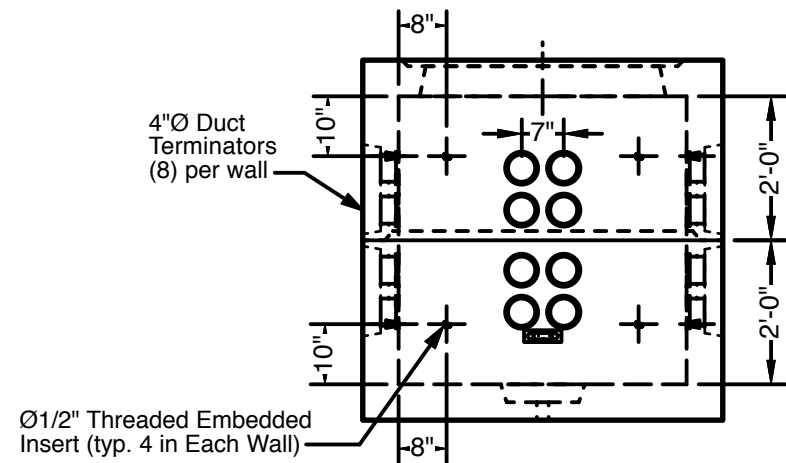
1" Ø CS102 Butyl Rope Mastic Is Provided For Placement In Horizontal Joint.

Approximate HH Weight ± 8,500 Lbs.

Bottom Section : ± 4,350 Lbs. Top Section: ± 4,150 Lbs.



SIDE VIEW



END VIEW