

# 4' x 4' x 4' Standard Knockout Handhole - Two Piece Style



Advance Concrete Products Company

(800) 824-8351 (248) 887-4173 Fax: (248) 887-2755

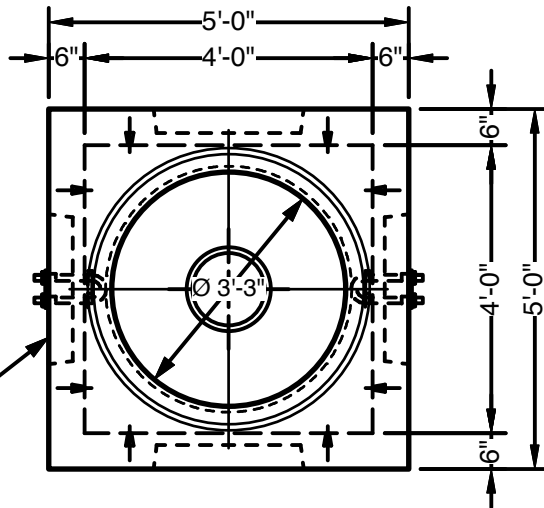
All Concrete Shall Have A 28 Day Compressive Strength Of 4500 PSI.

Reinforcing Steel Shall Comply With ASTM A615 Grade 60 Rebar.  
Bar Bending And Placement Shall Comply With The Latest ACI Standards.

Standard Structural Design Based On AASHTO HS 20 Wheel Loading.

1"  $\varnothing$  CS-102 Butyl Rope Mastic Is Provided  
For Placement In Top Seam.

24"W x 9"H  
Knockout Window  
(typ. 2 per wall)



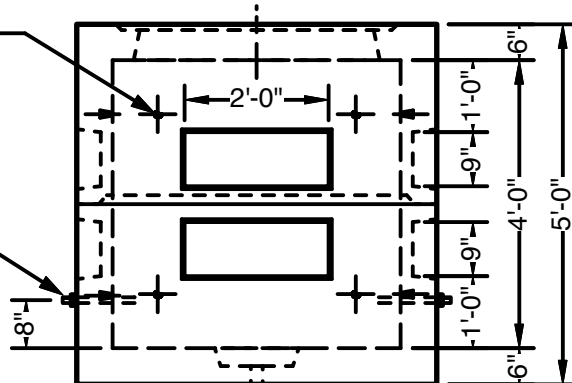
**PLAN VIEW**

**Approximate Weight** Total:  $\pm$  8,500 Lbs.  
Bottom Section :  $\pm$  4,350 Lbs. Top Section:  $\pm$  4,150 Lbs.

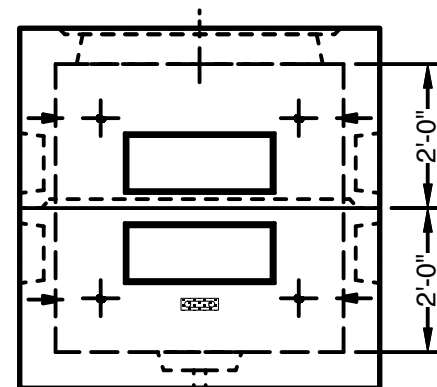
$\varnothing$ 1/2" Threaded  
Embedded  
Inserts in Walls

3/4"  $\varnothing$  Pulling Iron  
(typ. 2)

$\varnothing$ 12" x 3" Deep Sump Dish  
with 3/4"  $\varnothing$  Drain Plug



**SIDE VIEW**



**END VIEW**