

# 4' x 4' x 3' Type D Handholes

Advance Concrete Products Company



(800) 824-8351 (248) 887-4173 Fax: (248) 887-2755

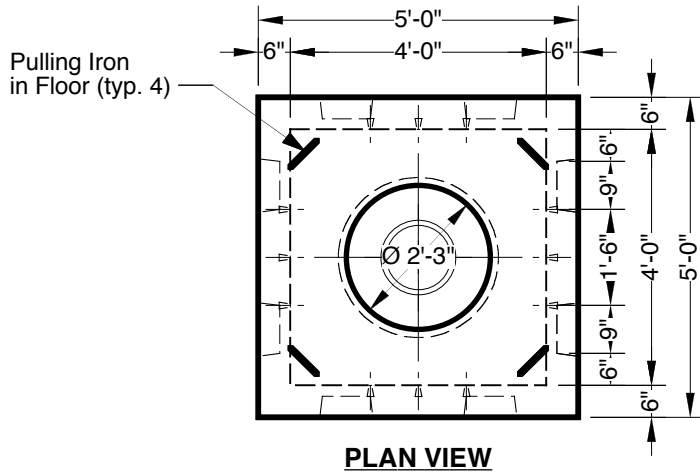
All Concrete Shall Have A 28 Day Compressive Strength Of 4500 Psi.

Reinforcing Steel Shall Comply With ASTM A615 Grade 60 Rebar.  
Bar Bending And Placement Shall Comply With The Latest ACI Standards.

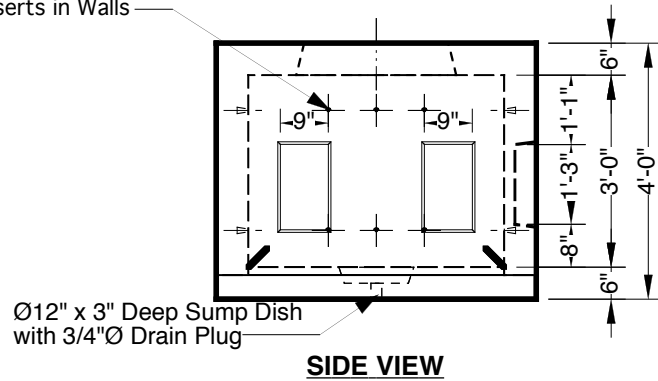
Standard Structural Design Based On AASHTO HS 20 Wheel Loading.

1" Ø Butyl Rubber Rope Mastic Is Provided  
For Placement In Top Seam.

- Options -  
Cast Iron Heavy Duty Frames & Covers  
Galvanized Steel Hardware  
6", 12" And 24" High Grade Adjustment Rings



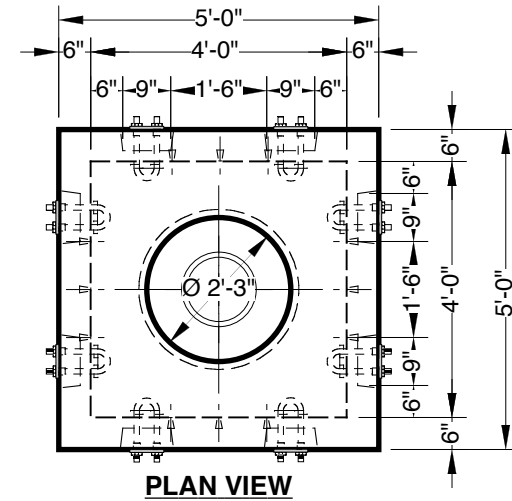
Ø1/2" Threaded  
Embedded  
Inserts in Walls



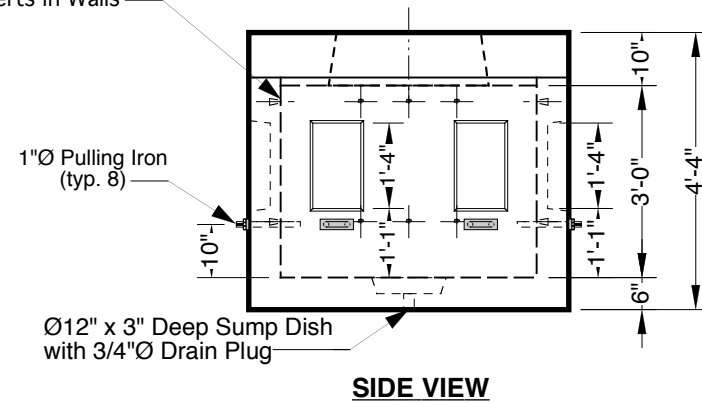
Ø12" x 3" Deep Sump Dish  
with 3/4" Ø Drain Plug

## 4' x 4' x 3' Standard Type D Handhole

Approximate Weight Total: ± 7,400 Lbs.  
Bottom Section : ± 5,500 Lbs. Top Section: ± 1,900 Lbs.



Ø1/2" Threaded  
Embedded  
Inserts in Walls



1" Ø Pulling Iron  
(typ. 8)

Ø12" x 3" Deep Sump Dish  
with 3/4" Ø Drain Plug

## 4' x 4' x 3' Custom Type D Handhole

Approximate Weight Total: ± 8,400 Lbs.  
Bottom Section : ± 5,700 Lbs. Roof: ± 2,700 Lbs.