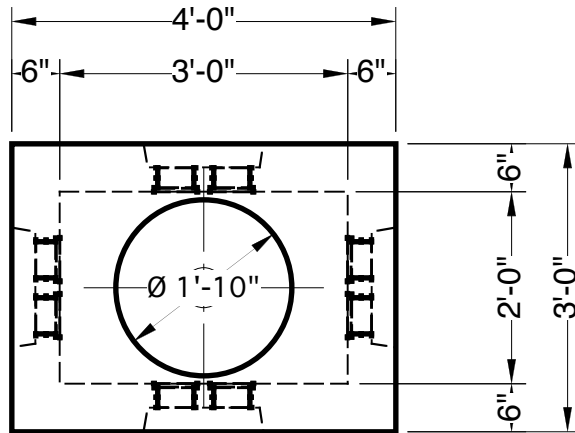


3' x 2' x 2'-6" Handhole

Advance Concrete Products Company



(800) 824-8351 (248) 887-4173 Fax: (248) 887-2755



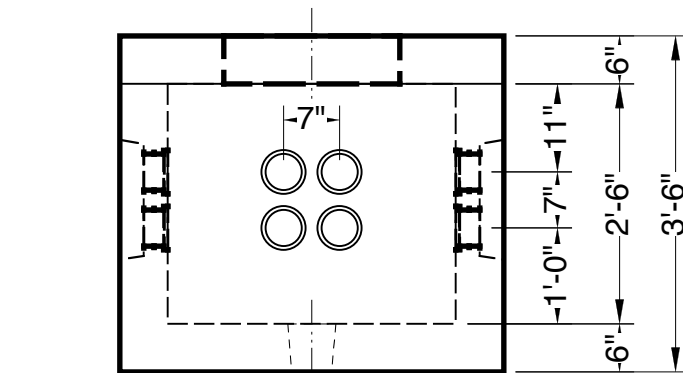
PLAN VIEW

All Concrete Shall Have A 28 Day Compressive Strength Of 4500 PSI.
Reinforcing Steel Shall Comply With ASTM A615 Grade 60 Rebar.
Bar Bending And Placement Shall Comply With The Latest ACI Standards.
Standard Structural Design Based On AASHTO HS 20 Wheel Loading.

1" \emptyset Butyl Rubber Rope Mastic Is Provided
For Placement In Top Seam.

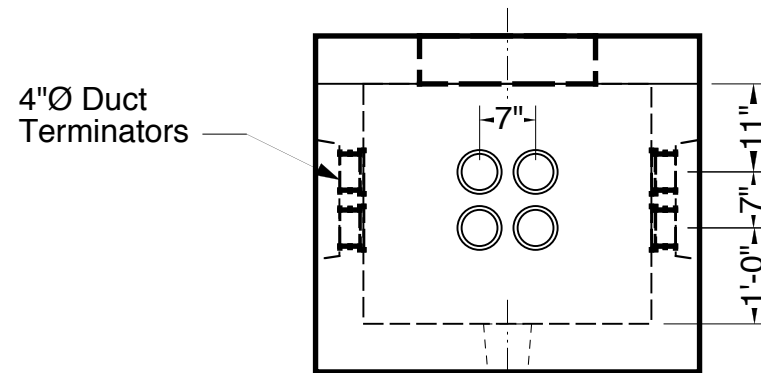
- Options -
- Round or Square Frames and Covers
- Hot-Dipped Galvanized Steel Pulling Irons
- Custom Terminator or Opening Locations

Approximate Weight Total: \pm 4,050 Lbs.
Bottom Section : \pm 3,300 Lbs. Roof: \pm 750 Lbs.



5" \emptyset Sump Hole

SIDE VIEW



4" \emptyset Duct Terminators

END VIEW