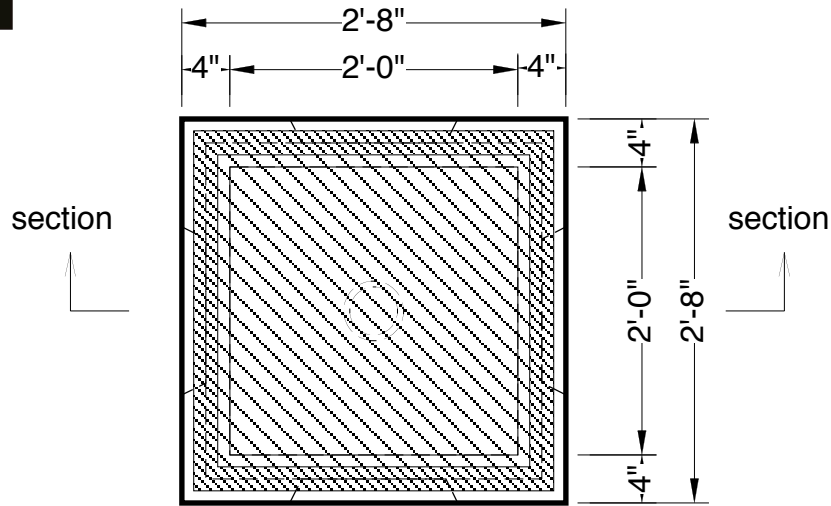


# 2' x 2' x 3' Handhole

Advance Concrete Products Company



(800) 824-8351 (248) 887-4173 Fax: (248) 887-2755



**PLAN VIEW**

All Concrete Shall Have A 28 Day Compressive Strength Of 4500 PSI.

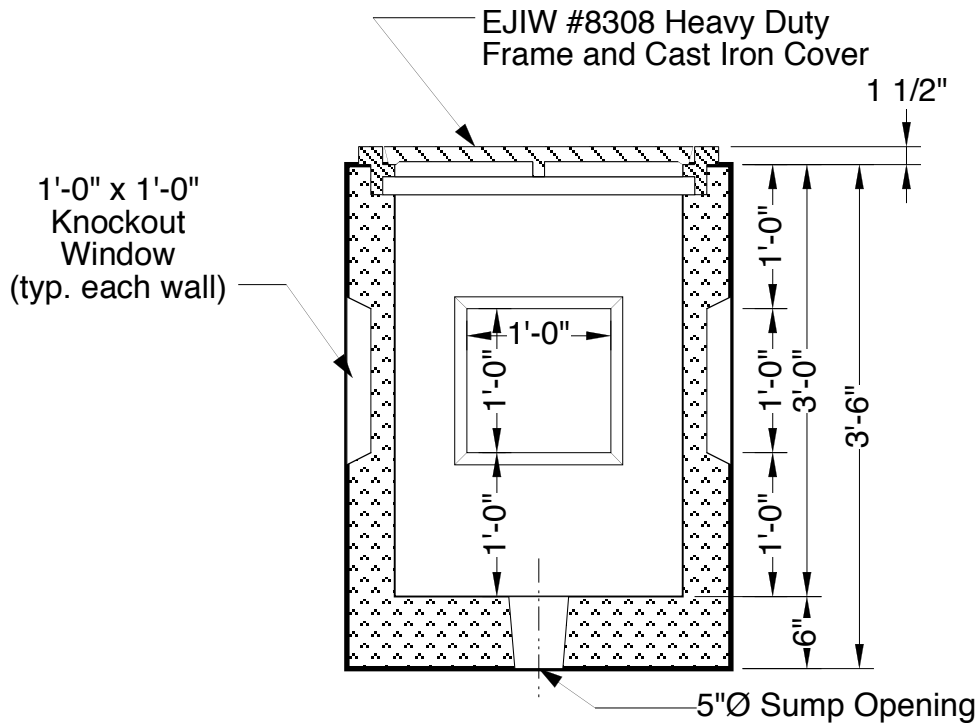
Reinforcing Steel Shall Comply With ASTM A615 Grade 60 Rebar.  
Bar Bending And Placement Shall Comply With The Latest ACI Standards.

Standard Structural Design Based On AASHTO HS 20 Wheel Loading.

1" Ø Butyl Rubber Rope Mastic Is Provided  
For Placement In Top Seam.

- Lettering Options -
- ELECTRIC
- COMM
- TRAFFIC

Approximate Handhole Weight: ± 1,800 Lbs.



**SECTION VIEW**