

Michigan Department of State Highway 24" Ø x 36" Handhole



Advance Concrete Products Company

(800) 824-8351 (248) 887-4173 Fax: (248) 887-2755

All Concrete Shall Have A 28 Day Compressive Strength Of 4500 PSI.

Reinforcing Shall Be 6x6 10/10 Welded Wire Mesh.

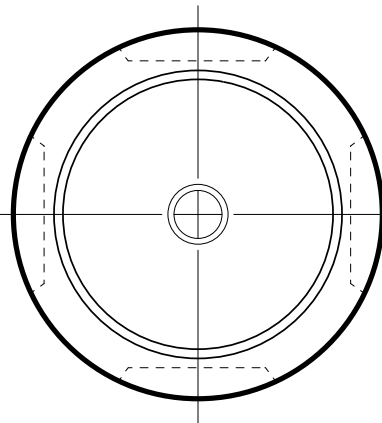
Standard Structural Design Based On AASHTO HS 20 Wheel Loading.

- Lettering Options Normally in Stock -
MDOT ELECTRIC
MDOT TRAFFIC SIGNAL

- Lettering Options Possible for Order -
LIGHTING
SIGNALS & LIGHTING
ELECTRIC
COMMUNICATION
TRAFFIC SIGNAL

section

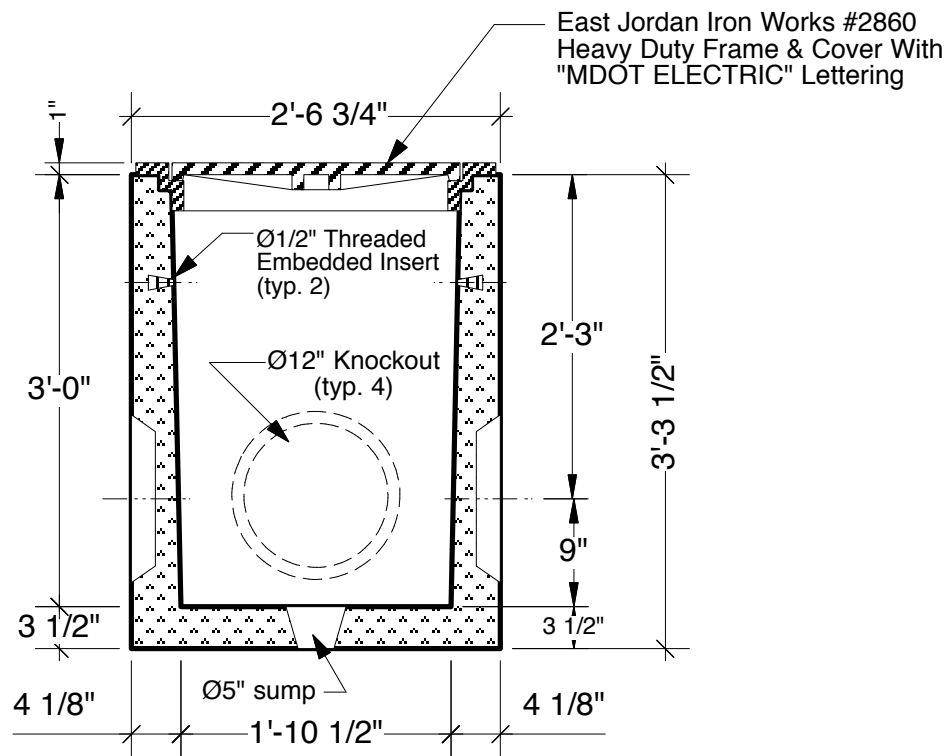
section



PLAN VIEW

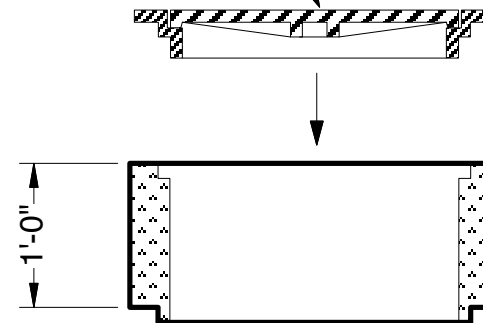
(w/out Frame & Cover)

Approximate Handhole Weight: ± 1,050 Lbs.
Approximate Riser Weight: ± 315 Lbs.



SECTION VIEW

Custom #2860 frame can be manufactured with anchors to cast into the precast concrete riser during production



SECTION VIEW

6", 12", and 14" Tall Precast Concrete Risers Available For Directly Under #2860 Frame