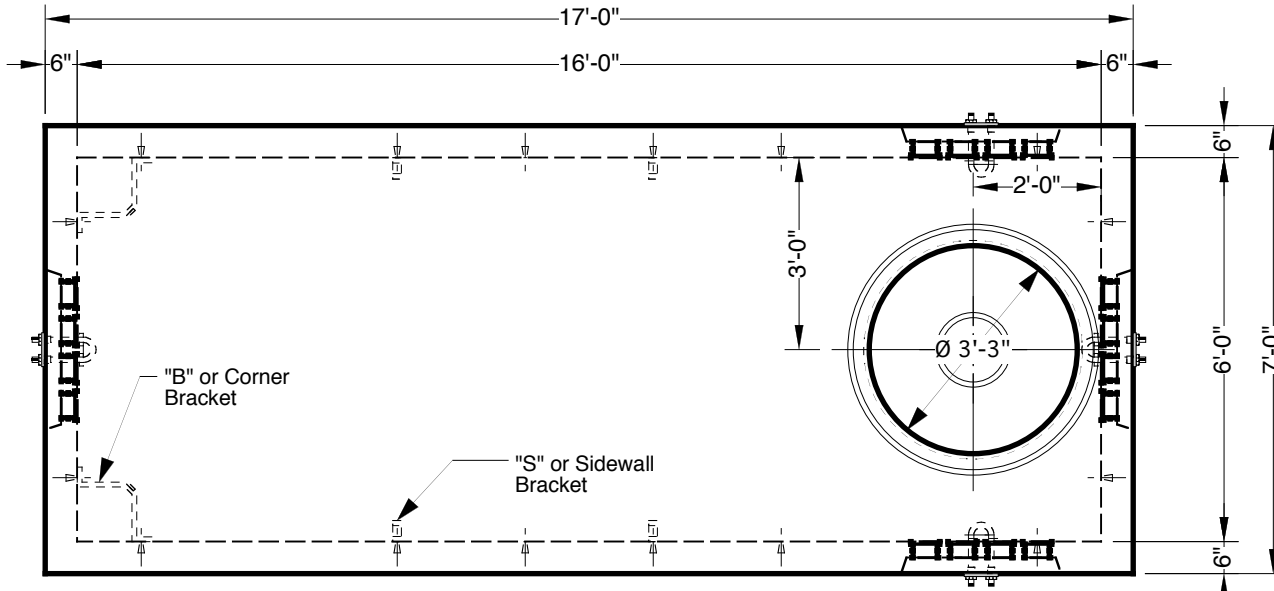


16' x 6' x 7' Type J Manhole

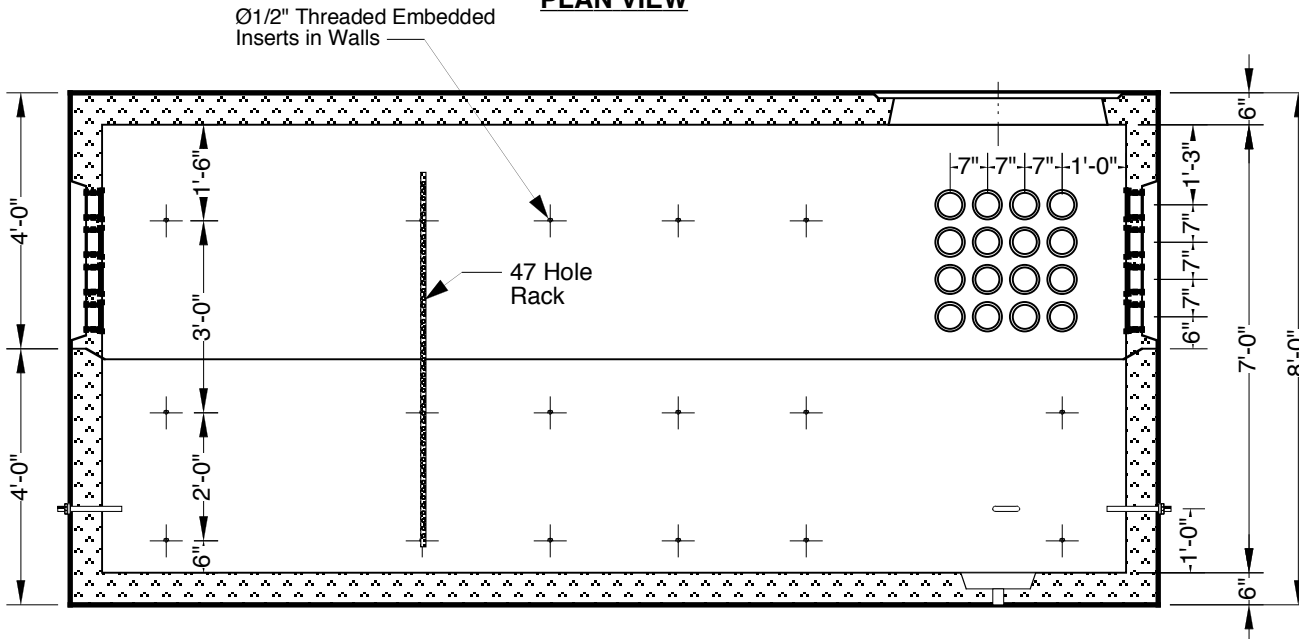
Advance Concrete Products Company



(800) 824-8351 (248) 887-4173 Fax: (248) 887-2755



PLAN VIEW



SECTION VIEW

All Concrete Shall Have A 28 Day Compressive Strength Of 4500 PSI.
 Reinforcing Steel Shall Comply With ASTM A615 Grade 60 Rebar.
 Bar Bending And Placement Shall Comply With The Latest ACI Standards.
 Standard Structural Design Based On AASHTO HS 20 Wheel Loading.

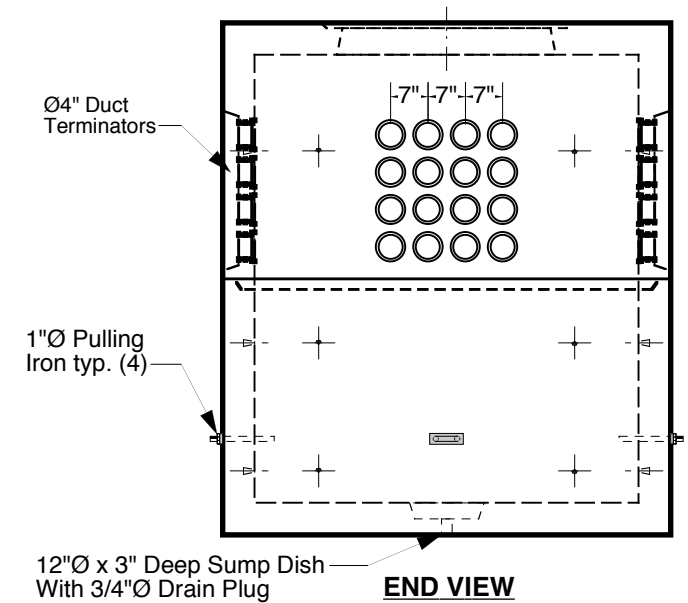
-Optional Galvanized Steel Hardware Package-

"S" Brackets	24
"B" Brackets	8
47 Hole Racks	12
1/2" X 13 X 1 1/4" Bolts	40
1/2" X 13 Nuts	40
1/2" X 13 X 1 3/4" Bolts	64
8'-0" Hooked Ladder	1

1" Ø Butyl Rubber Rope Mastic Is Provided For Placement Between Top And Bottom Sections Of Vault.

6", 12", & 24" High Grade Adjustment Rings Available

Approximate Weight Total: ± 41,900 Lbs.
 Bottom Section: ± 21,200 Lbs. Top Section: ± 20,700 Lbs.



END VIEW