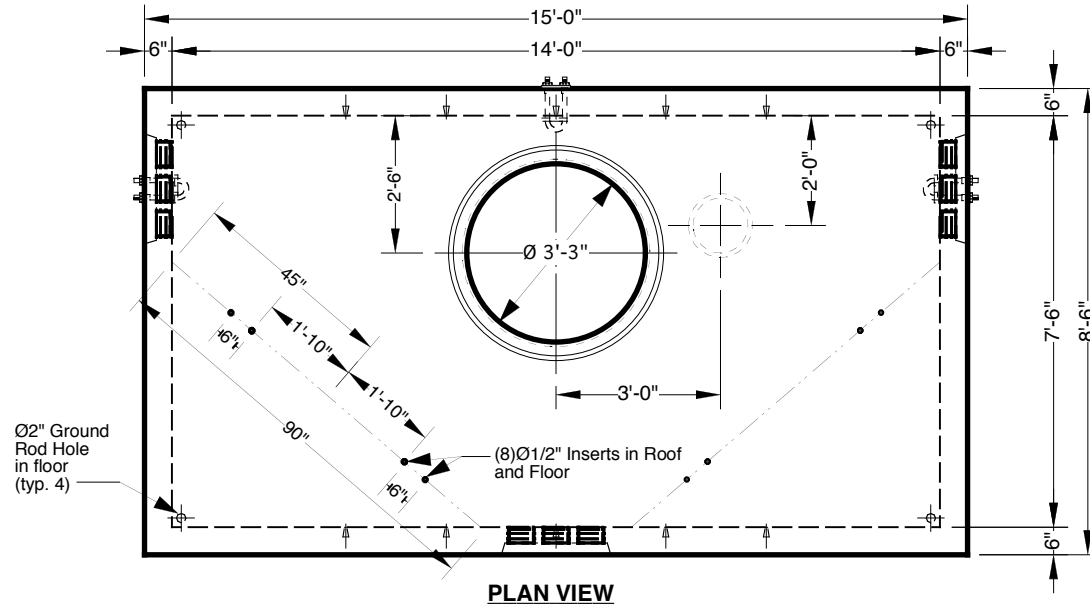


14' x 7-6" x 7' Three-Way Manhole



Advance Concrete Products Company

(800) 824-8351 (248) 887-4173 Fax: (248) 887-2755



All Concrete Shall Have A 28 Day Compressive Strength Of 5000 PSI.

Reinforcing Steel Shall Comply With ASTM A615 Grade 60 Rebar.
Bar Bending And Placement Shall Comply With The Latest ACI Standards.

Standard Structural Design Based On AASHTO HS 20 Wheel Loading.

Hot-dipped Galvanized Steel Hardware
Or
Non-metallic Hardware Available

1" \varnothing Butyl Rubber Rope Mastic Is Provided For Placement
Between Top And Bottom Sections Of Vault.

6", 12", & 24" High Grade
Adjustment Rings Available

Approximate Weight Total: \pm 42,800 Lbs.
Bottom Section : \pm 20,150 Lbs. Top Section: \pm 22,650 Lbs.

