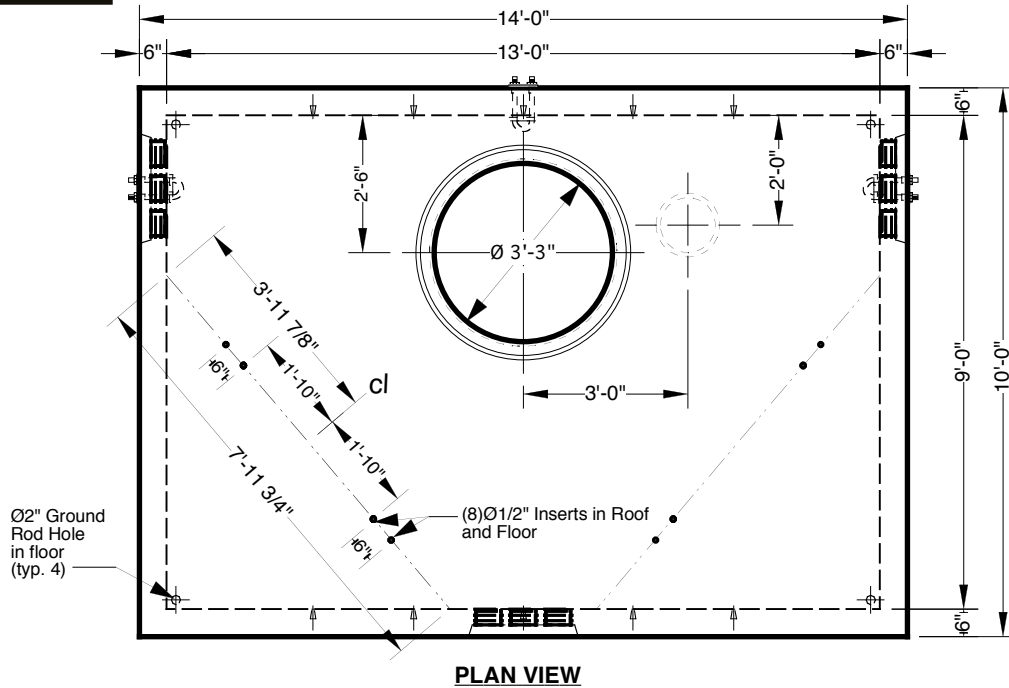


13' x 9' x 7' Three-Way Manhole

Advance Concrete Products Company



(800) 824-8351 (248) 887-4173 Fax: (248) 887-2755



All Concrete Shall Have A 28 Day Compressive Strength Of 5000 PSI.

Reinforcing Steel Shall Comply With ASTM A615 Grade 60 Rebar.
Bar Bending And Placement Shall Comply With The Latest ACI Standards.

Standard Structural Design Based On AASHTO HS 20 Wheel Loading.

Hot-dipped Galvanized Steel Hardware

Or

Non-metallic Hardware Available

1" Ø Butyl Rubber Rope Mastic Is Provided For Placement
Between Top And Bottom Sections Of Vault.

6", 12", & 24" High Grade
Adjustment Rings Available

Approximate Weight Total: ± 45,000 Lbs.
Bottom Section : ± 21,400 Lbs. Top Section: ± 23,600 Lbs.

