



# 12' x 6' x 7' Aircraft Rated Manhole

Advance Concrete Products Company



(800) 824-8351 (248) 887-4173 Fax: (248) 887-2755

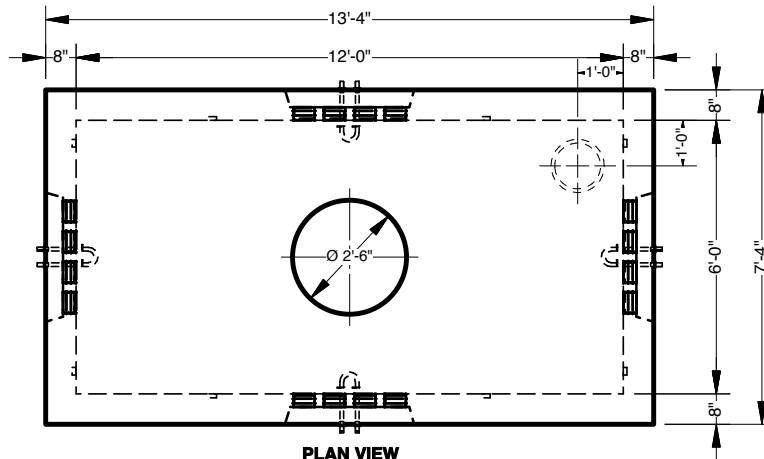
All Concrete Shall Have A 28 Day Compressive Strength Of 6000 Psi

Reinforcing Steel Shall Comply With ASTM A615 Grade 60 Rebar  
Bar Bending And Placement Shall Comply With The Latest ACI Standards

Aircraft Rated Structural Design

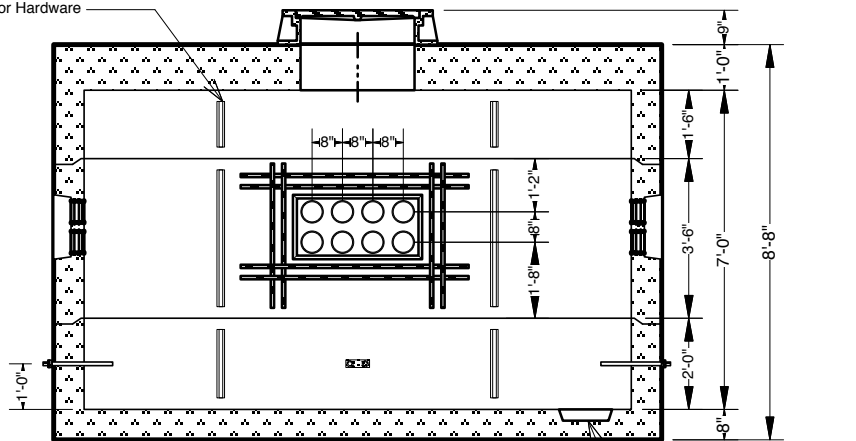
Please contact us for reinforcement information.

Optional Accessories:  
Spring Loaded Hatches  
Grade Adjustment Rings  
Rectangular or Square Risers  
Ladder or Steps  
Galvanized Steel or Non-Metallic Hardware  
Sump Grate



**PLAN VIEW**  
(w/out frame & cover)

Powerstrut or Threaded Embedded Inserts Optional for Hardware



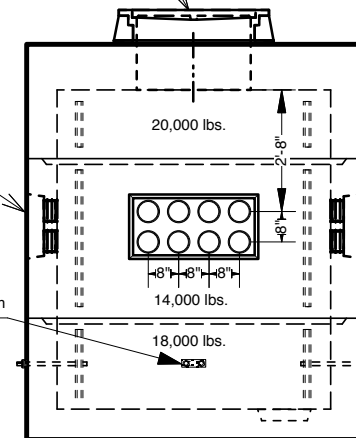
**SECTION VIEW**

12"Ø x 3" Deep Sump Dish

Aircraft Loading Ductile Iron  
Frame and Cover  
With "ELECTRIC" Lettering

(8) Terminators for  
Ø5" PVC Conduit  
(typ. each wall)

Ø1" Galv. Steel  
U-Bolt Pulling Iron  
(typ. 4)



**END VIEW**