



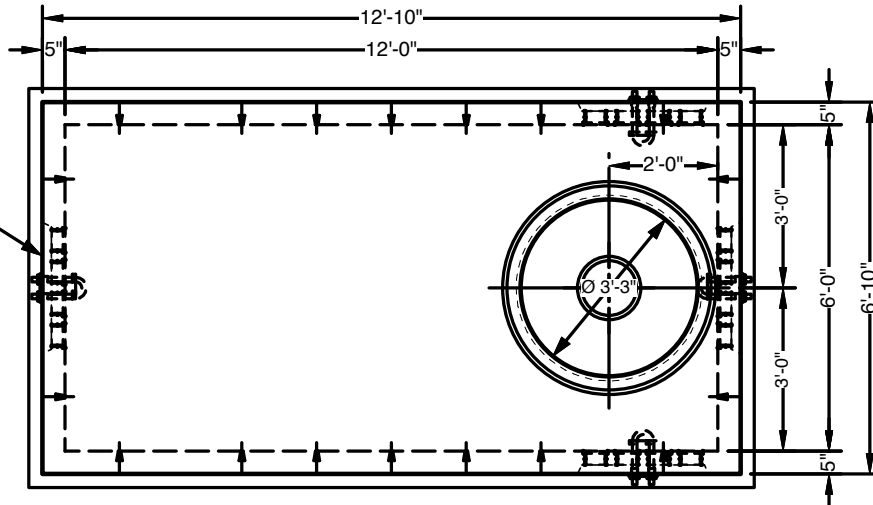
Precast Concrete 12' x 6' x 7' Type J Manhole

Advance Concrete Products Company

(800) 824-8351 (248) 887-4173 Fax: (248) 887-2755



(24) MA Industries Ø4" Duct Terminators (typ. 24 each wall)



PLAN VIEW

All Concrete Shall Have A 28 Day Compressive Strength Of 4500 PSI.

Reinforcing Steel Shall Comply With ASTM A615 Grade 60 Rebar. Bar Bending And Placement Shall Comply With The Latest ACI Standards.

Standard Structural Design Based On AASHTO HS 20 Wheel Loading with 12" to 48" Cover.

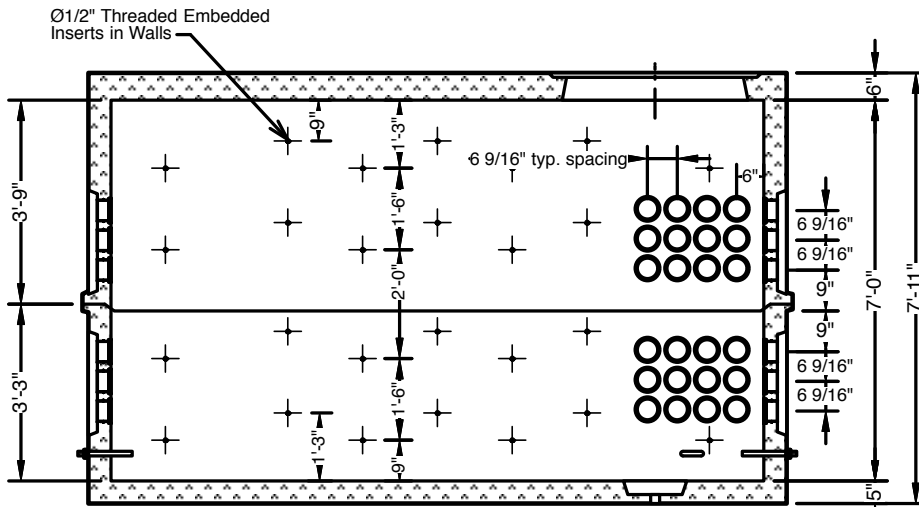
1" Ø CS-102 Butyl Rope Mastic Is Provided For Placement Between Top And Bottom Sections Of Vault.

-Galvanized Steel Hardware Package Included-

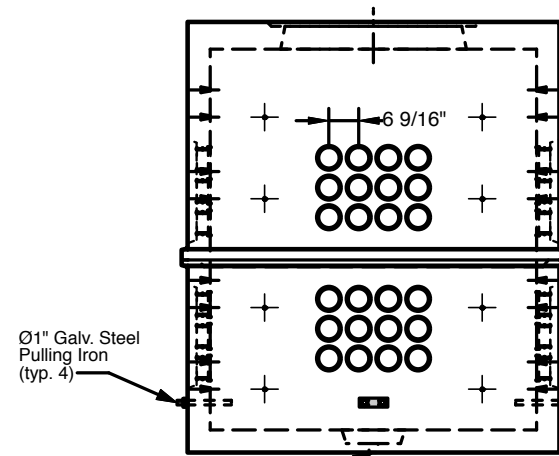
"S" Brackets	24
"B" Brackets	16
47 Hole Racks	14
1/2" X 13 X 1 1/4" Bolts	40
1/2" X 13 Nuts	40
1/2" X 13 X 2" Bolts	72
8'-0" Hooked Ladder	1

4", 6", 12", & 24" Tall Grade Adjustment Rings Available.

Approximate Weight Total: ± 28,500 Lbs.
Bottom Section : ± 14,250 Lbs. Top Section: ± 14,250 Lbs.



SECTION VIEW



RIGHT END VIEW

12"Ø x 3" Deep Sump Dish With 3/4"Ø Drain Plug