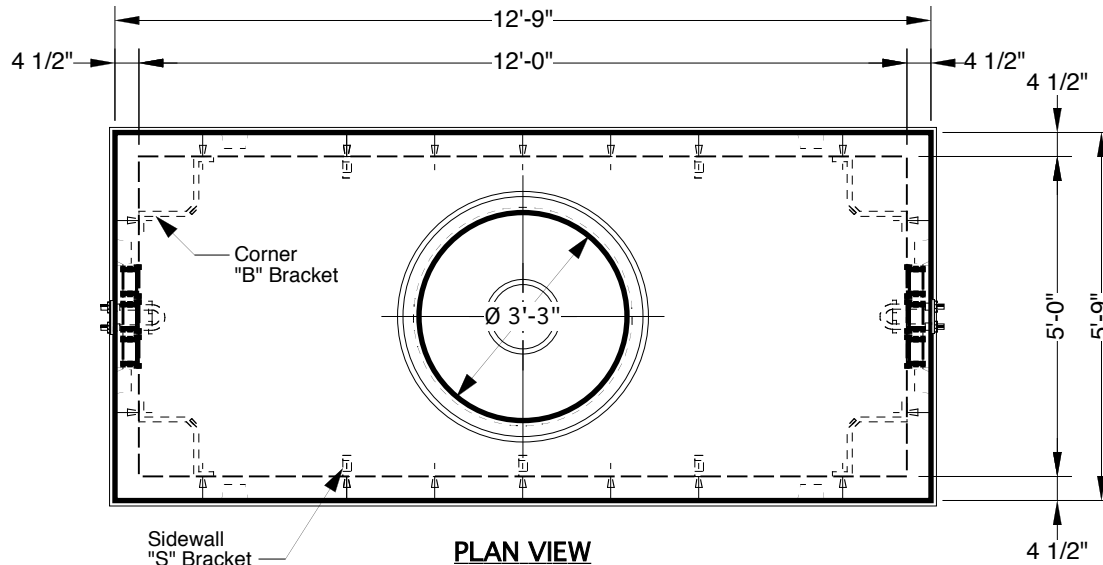


# 12' x 5' x 6'-6" Type A Manhole

Advance Concrete Products Company



(800) 824-8351 (248) 887-4173 Fax: (248) 887-2755



**PLAN VIEW**

All Concrete Shall Have A 28 Day Compressive Strength Of 4500 PSI.  
 Reinforcing Steel Shall Comply With ASTM A615 Grade 60 Rebar.  
 Bar Bending And Placement Shall Comply With The Latest ACI Standards.  
 Standard Structural Design Based On AASHTO HS 20 Wheel Loading.

-Optional Galvanized Steel Hardware Package-

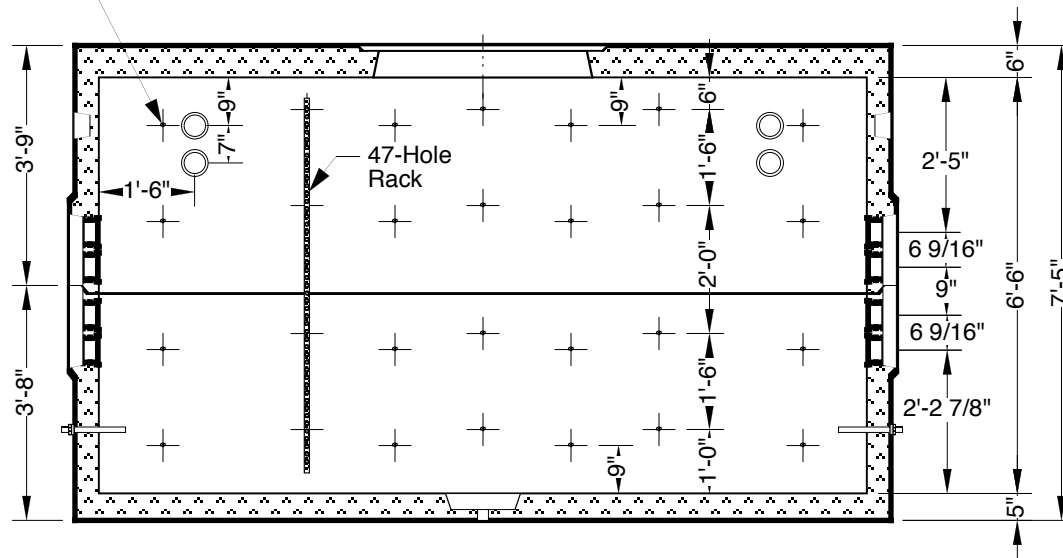
"S" Brackets	24
"B" Brackets	16
47 Hole Racks	14
1/2" X 13 X 1 1/4" Bolts	40
1/2" X 13 Nuts	40
1/2" X 13 X 1 3/4" Bolts	72
8'-0" Hooked Ladder	1

1" Ø Butyl Rubber Rope Mastic Is Provided For Placement Between Top And Bottom Sections Of Vault.

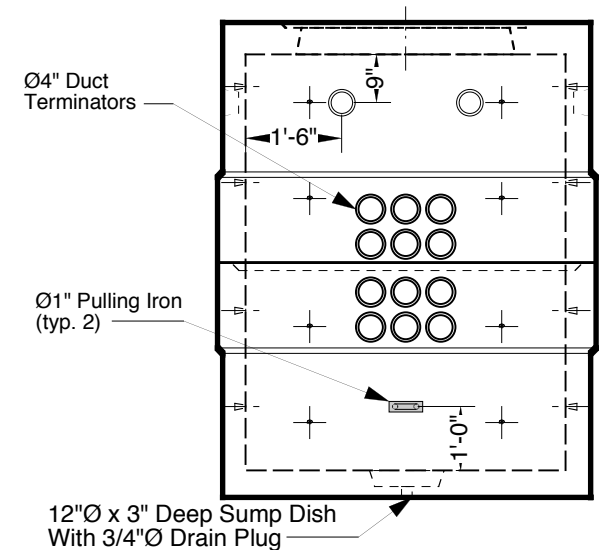
6", 12", & 24" High Grade Adjustment Rings Available

**Approximate Weight** Total : ± 25,000 Lbs.  
 Bottom Section : ± 12,500 Lbs. Top Section : ± 12,500 Lbs.

Ø1/2" Threaded Embedded Inserts



**SECTION VIEW**



**RIGHT END VIEW**