



Advance Concrete Product Co.
 975 N. Milford Rd. • Highland, MI
 (248)887-4173 • (800)824-8351
 FAX (248)887-2755



Precast Concrete 12' x 10' x 8' Storage Building

Concrete: 5000 P.S.I. @ 28 Days
 ACI318-83 Grade 60 Reinforcing Steel

Roof Load: 70 psf
 Wind Load: 27 psf or 130 mph
 Floor Live Load: 100 psf
 Fire Resistance Rating: 1 1/2 hours

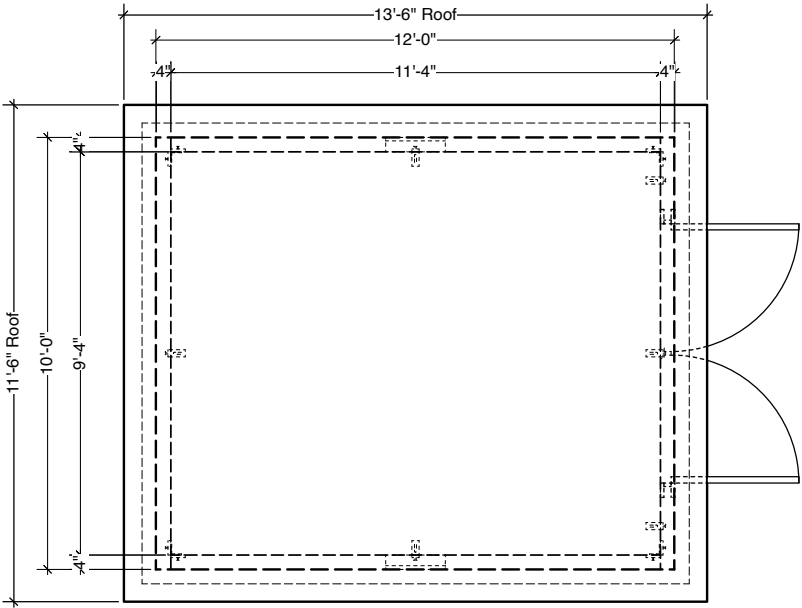
Walls to have 17A limestone exposed aggregate finish on exterior.

Double Steel Doors manufactured with 18 gauge steel in 16 gauge steel frame, 1 3/4" thick, primed for paint, with standard, keyed Schlage lockset.

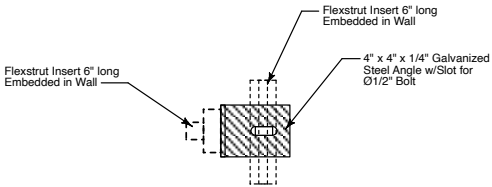
Capped Roof Design with Built-in Drip Edge.

Caulk Provided for Vertical Wall Joints.

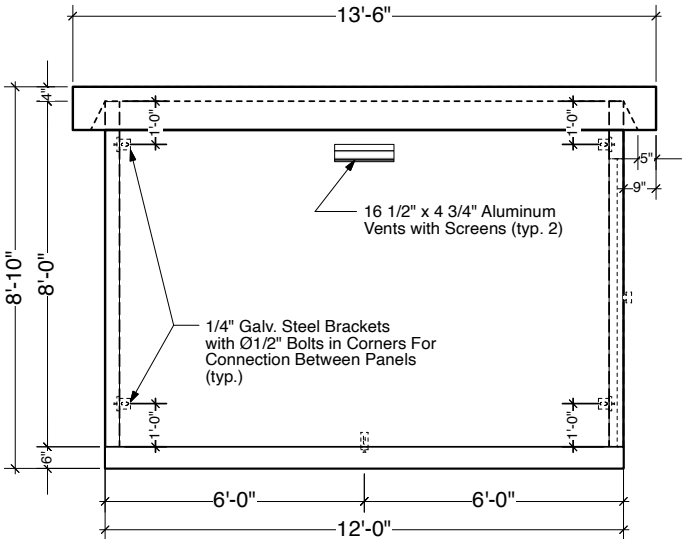
CS-102 Butyl Rope Mastic Provided for Floor-to-Wall and Roof-to-Wall Joints.



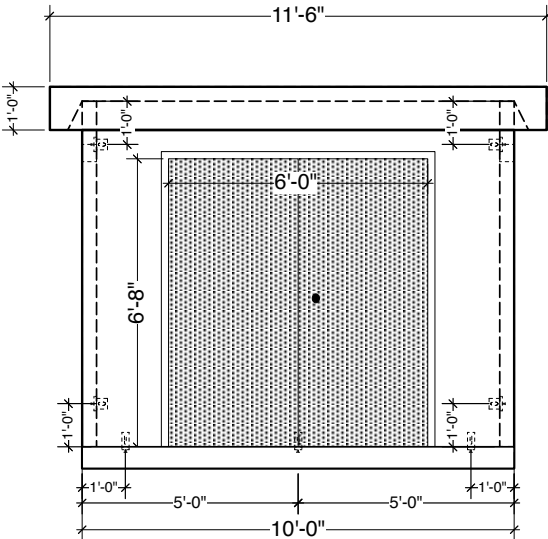
PLAN VIEW



Panel-to-Panel Attachment Detail View Looking At Interior Corner



SIDE VIEW



END VIEW