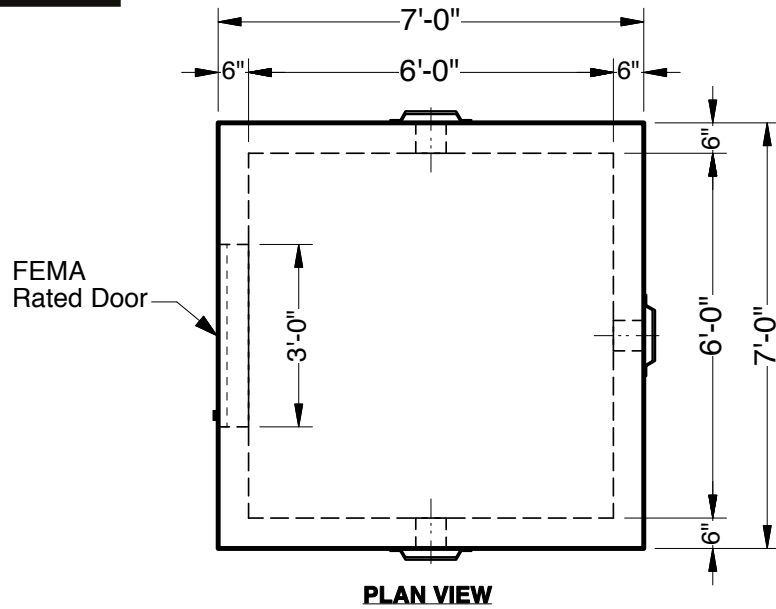


6' x 6' x 7' Precast Concrete "StormSafe" Shelter



Advance Concrete Products Company

(800) 824-8351 (248) 887-4173 Fax: (248) 887-2755



All Concrete Shall Have A 28 Day Compressive Strength Of 6000 PSI.

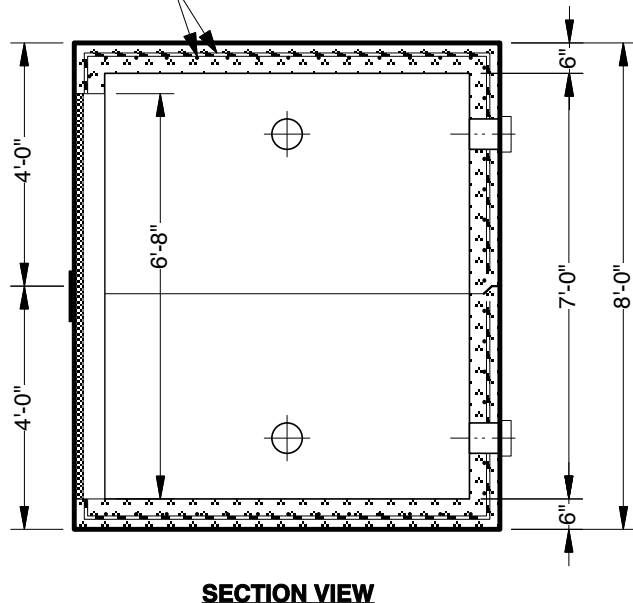
Reinforcing Steel Shall Comply With ASTM A615 Grade 60 Rebar.
Bar Bending And Placement Shall Comply With The Latest ACI Standards.

Structural Design Per Michigan Professional Engineer's Structural Calculations

1" Ø Butyl Rubber Rope Mastic Is Provided For Placement
Between Top And Bottom Sections Of Vault.

Approximate Weight 19,500 Lbs. or 9.75 Tons

Grade 60 5/8" #5 Rebar
Reinforcement @ 6" O.C.
Conforming to ASTM A706



Protected Vents
As Required

